

**First records and a new species of *Cryptolestes* Ganglbauer
(Coleoptera: Cucujidae) from Afghanistan**

By L. P. LEFKOVITCH, Slough*

Through the kindness Dr. Z. KASZAB, I have been able to examine nineteen *Cryptolestes* which were collected in Afghanistan in 1953 (J. KLAPPERICH). These specimens represent three species, one of which has not previously been described. It is well known that the species of this genus are difficult to distinguish on external characters alone; in the description which follows, attention has been focussed on the genitalia which are illustrated. For the synonymy of previously described species, reference should be made to LEFKOVITCH, 1962, Bull. Brit. Mus. (nat. Hist.) Ent., 12 (4) : 165 = 245.

***Cryptolestes ferrugineus* (STEPHENS)**

One specimen (female) S. Afghanistan (Kandahar, 950 m, 13. 11. 1953), J. KLAPPERICH.

This specimen, whose genitalia have been examined, differs from the female illustrated by LEFKOVITCH, op. cit., in having longer elytra. Such differences must be expected in a species known to be heterogonic; one specimen provides no evidence for any sort of infra-specific category.

***Cryptolestes biskrensis* (GROUVELLE)**

One specimen (female) NO Afghanistan (Nuristan, 1200 m, Bashgultal 3. V. 1953), J. KLAPPERICH.

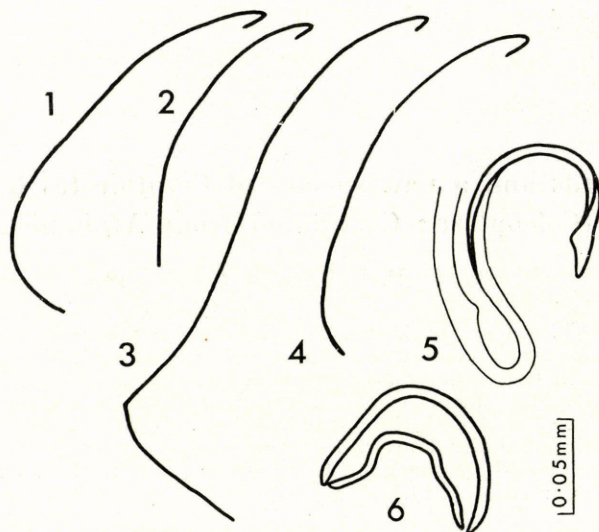
The genitalia of this specimen has been examined. The species is otherwise known from Chellala, Biskra, Moyen Chari, Uganda (KATONA) and the Congo (Garamba). Its occurrence in Afghanistan is thus a little surprising but both external and internal characters leave no room for doubt about its identity.

***Cryptolestes klapperichi* sp. n.**

As *Cryptolestes ferrugineus* (STEPHENS) but differing as follows: epistome truncate or slightly concave, external mandibular tooth of male rounded externally (fig. 1); genitalia as in figs. 5 and 6. It differs from *C. capensis* (WALTL) in having more prominent hind angles to the prothorax, in the mandibles of the males and in the genitalia. Figs. 2, 3 and 4 illustrate comparative details.

* Pest Infestation Laboratory, London Rd., Slough, Bucks., England

Holotype (male) O. Afghanistan (Kunartal, 500 m, Jalalabad, 30. III. 1953), J. KLAPPERICH. Paratypes (six males and ten females) with same data as holotype.



Figs. 1—4 dorsal view of lateral margin of left mandibles. 1: *C. klapperichi* sp. n. male; 2: *C. klapperichi* sp. n. female; 3: *C. ferrugineus* (STEPHENS) male; 4: *C. ferrugineus* (STEPHENS) female; — 5: bursa copulatrix of *C. klapperichi* sp. n.; 6: accessory sclerites of male genitalia of *C. klapperichi* sp. n.

The species belongs to a distinct group of the genus which includes *C. spartii* (CURTIS) (= *ater* OLIVIER) characterised by the particular kind of secondary sexual dimorphism in the mandibles of the male (see LEFKOVITCH, op. cit.).