

**A List of the Elaterid-Beetles from South Asia  
Preserved in the Hungarian Natural History Museum  
(Coleoptera) Parts I.-V.**

By HITOO ÔHIRA, Okazaki\*

In the series of the present study the author has examined many specimens of Elaterid-beetles from South Asia preserved in the collection of the Hungarian Natural History Museum. All the type-specimens described in this paper are preserved in the above museum, but some paratypes are in the collection of the Entomological Laboratory, Aichi University of Education, Japan.

Before going further, the author is deeply indebted to Dr. Z. KASZAB of the Zoological Department of the Hungarian Natural History Museum for the loan of specimens and various kind suggestions in the study. Tanks are due to Miss C. M. F. VON HAJEK of the British Museum (Natural History), London, Dr. A. VILLIERS of the Muséum National d'Histoire Naturelle, Paris, Director J. COOREMAN of the Institut Royal des Sciences Naturelles de Belgique, and Dr. H. SAWADA of the Tokyo University of Agriculture, Tokyo for their valuable help in the study.

**Part I.  
Formosa**

Subfamily **Chalecolepidiinae** SCHENKLING, 1925

**Lanelater politus** (CANDÈZE, 1857) (Pl. I, Fig. G)

*Agrypnus politus* CANDÈZE, 1857, Mon. Elat., I: 43, pl. I, f. 2 (China).

*Agrypnus politus*: MIWA, 1934, Fauna Elat. Japan: 178 (Formosa).

*Lanelater politus*: ÔHIRA, 1966, Kontyû, 34 (3): 215 (Formosa).

Specimens examined: 4 exs., Taihanroku, 1908, H. SAUTER; 1 ex., Fuhosho, VII. 1909, H. SAUTER; 1 ex., Kosempo, IX. 1909, H. SAUTER; 1 ex., Puli, 12. X. 1957, W. CHANG.

Distribution: Formosa, China, Java.

**Paracalais putridus putridus** (CANDÈZE, 1857) (Pl. I, Fig. A)

*Alaus putridus* CANDÈZE, 1857, Mon. Elat., I: 233, t. 4. f. 15 (Batavia).

*Alaus larvatus*: CANDÈZE, 1874, Rév. Mon. Elat.: 141 (China).

*Paracalais putridus putridus*: ÔHIRA, 1969, Bull. Aichi Univ. Educ., XVIII (Nat. Sci.): 89 (Ryukyus, South Asia).

\* Entomological Laboratory, Aichi University of Education, Kariya, Japan.

Specimens examined: 1 ♀, Kanshirei, VI. 1908, H. SAUTER; 4 ♀♀, Kosempo, VI. 1908, H. SAUTER; 1 ♂ 2 ♀♀, Fuhosho, V. 1909, H. SAUTER; 1 ♀, Taihorinsho, VIII. 1909, H. SAUTER; 1 ♀, Kosempo, IX. 1909, H. SAUTER; 1 ♀, Alikang, IX. 1909, H. SAUTER.

Distribution: Ryukyus, Bonins, Formosa, China, South Asia.

**Paracalais elongatus** (MIWA, 1929) comb. nov. (Pl. I, Fig. B)

*Alaus elongatus* MIWA, 1929, Trans. Nat. Hist. Soc. Formosa, XIX (102): 237 (Formosa).

*Alaus elongatus*: MIWA, 1934, Fauna Elat. Japan: 188 (Formosa).

Specimen examined: 1 ♀, Kosempo, 24-30. VII. 1908, H. SAUTER.

Distribution: Formosa.

SZOMBATHY (1909, Ann. Hist.-nat. Mus. Nat. Hung., VII: 121) reported this species as the name of *Alaus pini* LEWIS.

Subfamily **Agrypninae** FLEUTIAUX, 1919

**Adelocera (Adelocera) setigera** (BATES, 1866) (Pl. I, Fig. C)

*Lacon setiger* BATES, 1866, Proc. Zool. Soc. London, II: 348 (Formosa).

*Lacon setiger*: MIWA, 1934, Fauna Elat. Japan: 182 (Ryukyus, Formosa).

Specimens examined: 9 exs., Fuhosho, IV-VIII, 1909, H. SAUTER.

Distribution: Ryukyus, Formosa, China.

**Adelocera (Adelocera) takiturna koshunensis** (MIWA, 1929)

*Paralacoon koshunensis* MIWA, 1929, Trans. Nat. Hist. Soc. Formosa, XIX (102): 233 (Formosa).

*Paralacoon takiturna*: MIWA, 1934, Fauna Elat. Japan: 186 (none CANDÈZE, 1874 from Laos).

Specimens examined: 1 ex., Fuhosho, V. 1909, H. SAUTER; 1 ex., Kosempo, V. 1909, H. SAUTER.

Distribution: Ryukyus, Formosa.

**Adelocera (Adelocera) sakaguchii** (MIWA, 1928)

*Lacon sakaguchii* MIWA, 1928, Ins. Mats., 2 (1): 14, pl. I, f. 3 (Ryukyus).

*Lacon sakaguchii*: MIWA, 1934, Fauna Elat. Japan: 184, 247, pl. VIII, f. 3 (Ryukyus, Formosa).

*Adelocera (Adelocera) sakaguchii*: ÔHIRA, 1967, Trans. Shikoku ent. Soc., 9 (3): 103, f. 20-22 (Ryukyus, Formosa).

Specimen examined: 1 ♂, Kosempo, VI. 1908, H. SAUTER.

Distribution: Ryukyus, Formosa.

**Adelocera (Sabikikorius) sauteri** sp. nov.

(Fig. 1; Plate I, Fig. D)

Male. Length 14 mm, breadth about 4 mm. Body elongate, subparallel-sided and more or less depressed above; dorsal surface clothed with short, recumbent, fulvous, scale-like pubescence and usually variegated with cinereous pubescence; surface dusky-brown and rather opaque; antennae (except basal segment dark-brown) yellow-brown and legs dark reddish-brown.

This new species is closely allied to *Adelocera (Sabikikorius) fuliginosus* (CANDÈZE, 1865) from Japan, but can be distinguished from the latter by the following points: the disc of pronotum covered with larger and deeper punctures; the propleura and metasternums usually having defined tarsal grooves and bearing

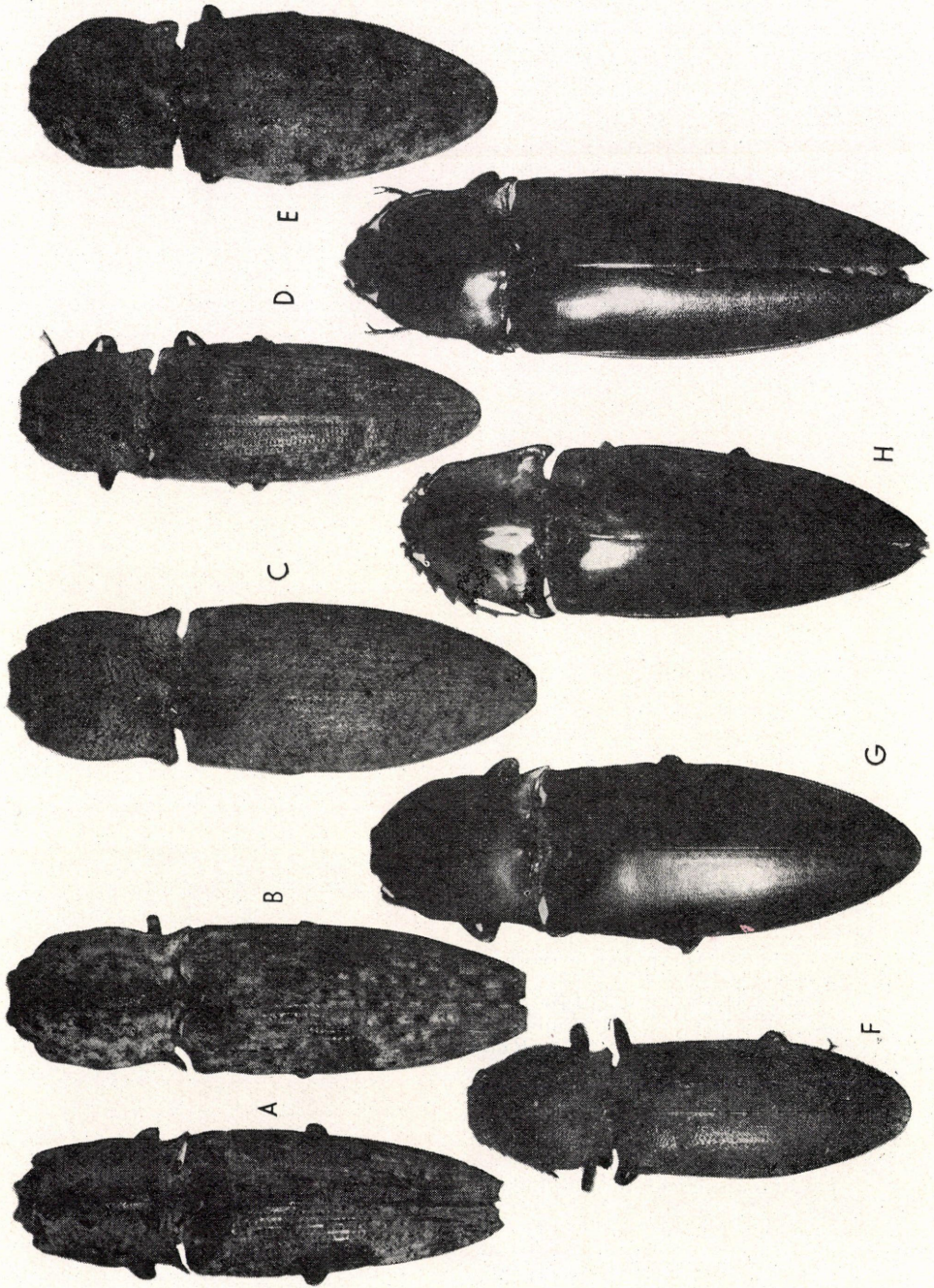


Plate I.

some scale-like pubescence in its each groove; the antennae more acutely serrate from fourth segment; the lateral lobe of aedeagus more weakly pointed apically. Also resembles *Adelocera (Sabikikorus) amamiensis okinawana* ÔHIRA, 1967 from Ryukyus, but differs from the latter by the pronotum which is more strongly convex and the sides more distinctly rounded at middle.

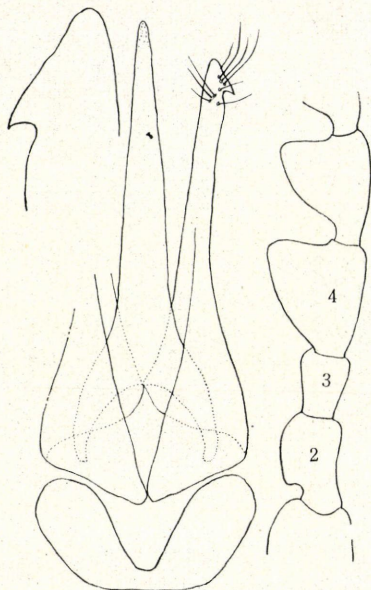


Fig. 1. Aedeagus and some basal segments of male antenna of *Adelocera (Sabikikorus) sauteri* sp. nov.

Holotype: ♂, Kanshirei, 1908, H. SAUTER; paratype, 1 ♂, ditto, 30. VI. 1908, H. SAUTER.

Distribution: Formosa.

***Agrypnus (Agrypnus) formosanus* (BATES, 1866) (Pl. I, Fig. E)**

*Lacon formosanus* BATES, 1866, Proc. Zool. Soc. London: 348 (Formosa).

*Lacon formosanus*: MIWA, 1934, Fauna Elat. Japan: 181 (Formosa).

*Agrypnus formosanus*: ÔHIRA, 1966, Kontyû, 34 (3): 216 (Formosa).

Specimens examined: 1 ♂ 2 ♀♀, Kanshirei, 1-15. VI. 1908, H. SAUTER; 1 ♂ 1 ♀, Amping, X. 1909, H. SAUTER.

Distribution: Formosa.

***Compsolaeon formosanus* (MIWA, 1929) (Pl. I, Fig. F)**

*Neolacon formosanus* MIWA, 1929, Trans. Nat. Hist. Soc. Formosa, XIX (102): 235, f. 2 (Formosa).

*Compsolaeon formosanus*: MIWA, 1934, Fauna Elat. Japan: 186 (Formosa).

Specimens examined: 1 ♀, 15-30. VI. 1908, H. SAUTER; 1 ♀, Kosempo, X. 1909, H. SAUTER.

Distribution: Formosa.

**Meristhus (Meristhus) scobinula** CANDÈZE, 1857

- Meristhus scobinula* CANDÈZE, 1857, Mon. Elat. I: 164, t. 2, f. 26 (China, Mexico).  
*Meristhus scobinula*: MIWA, 1934, Fauna Elat. Japan: 70, 187, pl. I, f. 11 (Japan, Formosa, China, India, Texas, Mexico, Guatemala, Cuba, Columbia).  
*Meristhus scobinula*: ÔHIRA, 1967, Trans. Shikoku ent. Soc., 9 (3): 106 (Ryukyus).  
 Specimen examined: 1 ex., Pilam, I. 1908, H. SAUTER.  
 Distribution: Japan, Ryukyus, Formosa, South Asia.

Subfamily **Conoderinae** FLEUTIAUX, 1919**Heteroderes changi** ÔHIRA, 1967

- Heteroderes changi* ÔHIRA, 1967, Kontyû, 35 (1): 57, f. 1, B (Formosa).  
 Specimen examined: 1 ♀, Pilam, I, 1908, H. SAUTER.  
 Distribution: Formosa.

**Aeoloderma brachmana** (CANDÈZE, 1859) (Pl. II, Fig. E)

- Aeolus brachmana* CANDÈZE, 1859, Mon. Elat., II: 283, 345 (Hindustan, Ceylon).  
*Aeolus sinensis*: CANDÈZE, 1859, Mon. Elat., II: 283, 346 (Hongkong).  
*Aeoloderma brachmana*: ÔHIRA, 1967, Ent. Rev., Japan, XIX (2): 41 (Japan, Ryukyus, Formosa, South Asia).  
 Specimen examined: 1 ex., Kosempo, I, 1908, H. SAUTER.  
 Distribution: Japan, Ryukyus, Formosa, South Asia.

**Aloderma sinensis** (CANDÈZE, 1859)

(Plate II, Fig. D)

- Aeolus sinensis* CANDÈZE, 1859, Mon. Elat., II: 346 (Hong-Kong).  
*Aloderma sinensis*: FLEUTIAUX 1929, Ency. Eut. Col.: 34 (Cochinchina, Cambodge, Laos, Tonkin).

Length 4 mm, breadth about 1 mm. Body small, moderately elongate and more or less depressed above; surface yellow-brown, legs pale yellow-brown except head, median longitudinal area of pronotum, around scutellum, basal areas of sutural and second intervals and a part of apical third (transverse zigzag band) on elytra usually dark-brown; surface shining and clothed with short, pale-yellow pubescence all over.

This species very closely allied to *Aeoloderma? agnata* (CANDÈZE, 1873) from Japan, but can be distinguished from the latter by having two kinds of punctures (small ones scattering among larger ones) on the disc of pronotum.

- Specimens examined: ♂, Takao, 9. VII. 1907, H. SAUTER.  
 Distribution: Formosa, South Asia.

Subfamily **Oxynopterinae** SCHENKLING, 1925**Campsosternus auratus** (DRURY, 1773) (Pl. I, Fig. I)

- Elater auratus* DRURY, 1773, Illustr. Ins., II: 65, t. 35, f. 3 (China).  
*Campsosternus auratus*: MIWA, 1934, Fauna Elat. Japan: 190 (China, Hainan, Tonkin, Annam, Cambodja, Formosa, Ryukyus).  
 Specimens examined: 15 exs., Taihanroku, VI. 1908, H. SAUTER; 3 exs., Kosempo, VI. 1908, H. SAUTER; 2 exs., Alikang, V. 1909, H. SAUTER; 2 exs., Kanshirei, VI. 1908, H. SAUTER; 1 ex., Takao, VI. 1908, H. SAUTER; 1 ex., Taitung, VI. 1957, W. CHANG.  
 Distribution: Ryukyus, Formosa, China, Hainan, Tonkin, Annam, Cambodja.

**Campsosternus gemma** CANDÈZE, 1857 (Plate I, Fig. H)

*Campsosternus gemma* CANDÈZE, 1857, Mon. Elat., I: 344 (Shanghai).

*Campsosternus gemma*: MIWA, 1934, Fauna Elat. Japan: 191, pl. IX, f. 9. (Formosa).

Specimens examined: 1 ♂, Fuhosho, IV. 1909, H. SAUTER; 1 ♀, Kosempo, IX. 1909, H. SAUTER; 1 ♂, Hualien, VI. 1956, W. CHUNG.

Distribution: Formosa.

Subfamily **Denticollinae** SCHENKLING, 1927**Hemiops flava** LAPORTE DE CASTELNAU, 1836 (Pl. II, Fig. B)

*Hemiops flava* LAPORTE DE CASTELNAU, 1836, in SIBERMANN Rév. ent., IV: 15 (China, Java, Malay, Indo-China).

*Hemiops flava*: MIWA, 1934, Fauna Elat. Japan: 241 (Bengal, South Hindustan, Sikkim, Assam, Birma, Malay, Sumatra, Java, Borneo, Indo-China, China, Formosa).

Specimens examined: 2 exs., Chip Chip, H. SAUTER; 1 ex., Takao, V. 1907, H. SAUTER; 1 ex., Taihanroku, VI. 1908, H. SAUTER; 1 ex., Flikang, V. 1909, H. SAUTER; 8 exs., Fuhosho, V. 1909, H. SAUTER; 21 exs., Kosempo, IX. 1909, H. SAUTER.

Distribution: Formosa, South Asia.

Subfamily **Physorhininae** FLEUTIAUX, 1919**Anchastus castelnaui** CANDÈZE, 1878

*Anchastus castelnaui* CANDÈZE, 1878, Elat. Nouv., II: 24 (Bankok).

*Anchastus castelnaui*: MIWA, 1934, Fauna Elat. Japan: 205 (Siam, Laos, Formosa, Ryukyus).

Specimen examined: 1 ♀, Alikang, VIII. 1909, H. SAUTER.

Distribution: Ryukyus?, Formosa, Siam, Laos, Singapore, Sumatra, Borneo.

Subfamily **Ampedinae** FLEUTIAUX, 1928**Melanoxanthus melanocephalus** (FABRICIUS, 1781)

*Elater melanocephalus* FABRICIUS, 1781, Spec. Ins., I: 272 (India).

*Melanoxanthus melanocephalus*: MIWA, 1934, Fauna Elat. Japan: 203 (Arabia, Madagascar, Maurice, Bourbon, Comores, Mascareignes, Séchelles, Zanzibar, India, Ceylon, Birma, Borneo, Sumatra, Siam, Indo-China, China, Formosa, Ryukyus, Philippines, Celebes, New Zealand, Sierra-Leone, Brasil).

Specimens examined: 3 exs., Takao, VII. 1907, H. SAUTER.

Distribution: Ryukyus, Formosa, South Asia and Westward to Zanzibar.

**Procrærus ligatus** (CANDÈZE, 1878) (Pl. II, Fig. C)

*Megapenthes ligatus* CANDÈZE, 1878, Ann. Mus. Civ. Genova: 124 (Sumatra).

*Megapenthes ligatus*: MIWA, 1934, Fauna Elat. Japan: 201, pl. IX, f. 1 (Sumatra, Borneo, Java, Birma, Tonkin, Cochín-China, Hongkong, Formosa).

*Procrærus ligatus*: FLEUTIAUX, 1947, Notes d'Ent. Chinoise, XI (8): 395 (Indo-China).

Specimens examined: 7 exs., Kosempo, VI. 1908, H. SAUTER.

Distribution: Formosa, South Asia.

**Hayekpenthes parallelaris** (MIWA, 1927)

*Megapenthes parallelaris* MIWA, 1927, Ins. Mats., 2 (1): 21, pl. I, f. 18 (Formosa).

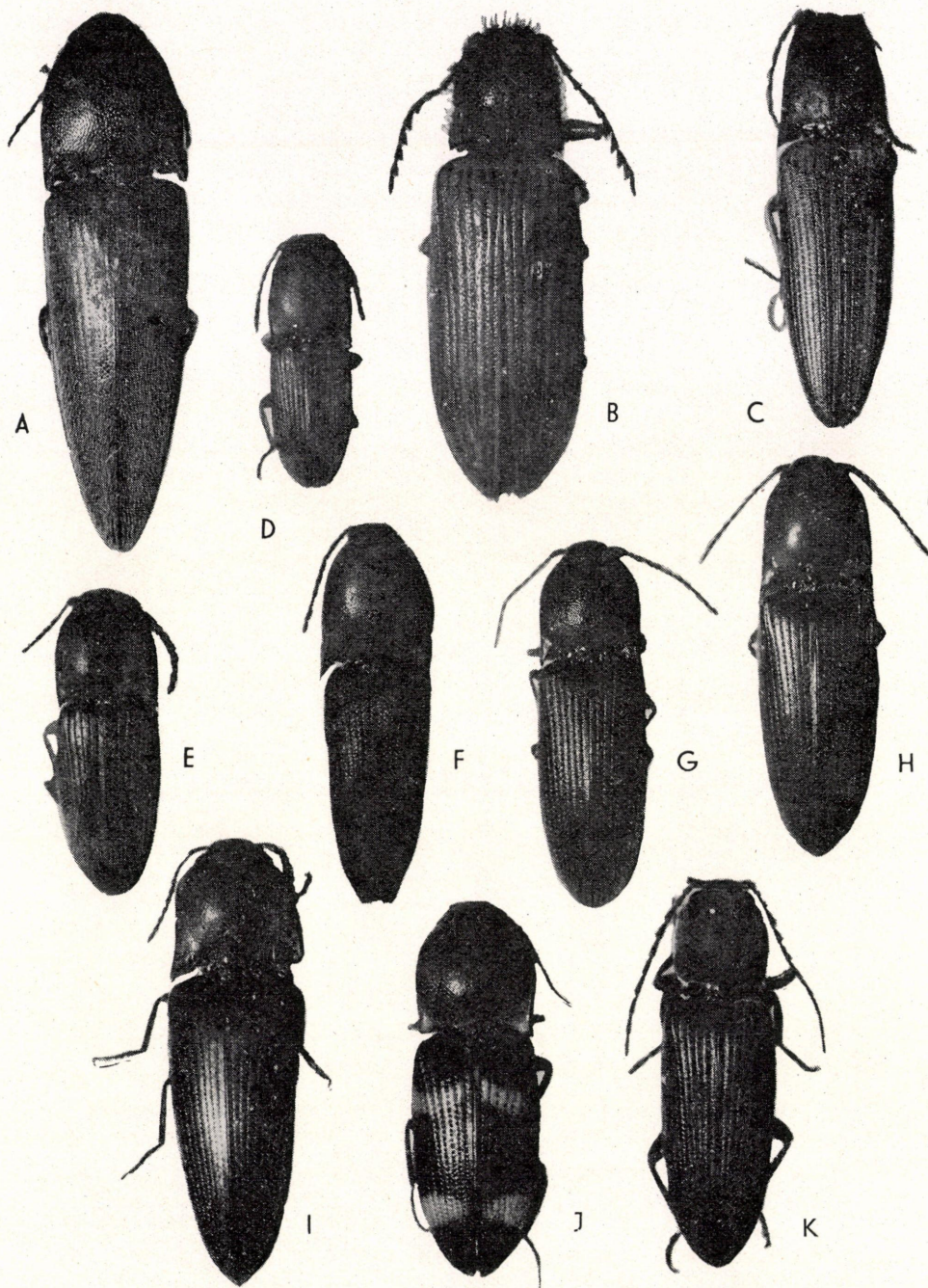
*Ganoxanthus parallelaris*: ÔHIRA, 1968, Kontyû, 36 (2): 140 (Ryukyus).

*Hayekpenthes parallelaris*: ÔHIRA, 1970, Ent. Rev. Japan, 22 (2): 87 (Ryukyus, Formosa).

Specimens examined: 2 exs., Kosempo, VII. 1908, H. SAUTER; 1 ex., Taihorinsho, IX. 1909, H. SAUTER.

Distribution: Ryukyus, Formosa.

Plate II.



**Melanoxanthus nigripennis** FLEUTIAUX, 1928 (Pl. II, Fig. F)

*Melanoxanthus nigripennis* FLEUTIAUX, 1928, *Encycl. Ent. Col.*: 148, 154 (Tonkin, Hoa-Binh).

*Melanoxanthus nigripennis*: MIWA, 1934, *Fauna Elat. Japan*: 204 (Formosa).

*Melanoxanthus nigripennis*: FLEUTIAUX, 1947, *Notes d'Ent. Chinoise*, XI (8): 392 (Indo-China).

Specimen examined: 1 ex., Kosempo, VI. 1908, H. SAUTER.

Distribution: Formosa, Indo-China.

Subfamily **Elaterinae** FLEUTIAUX, 1936**Neotrichophorus rubiginosus** ÔHIRA, 1966

*Neotrichophorus rubiginosus* ÔHIRA, 1966, *Kontyû*, 34 (3): 272, f. 39, 40 (Formosa).

*Neotrichophorus rubiginosus*: ÔHIRA, 1967, *Bull. Japan Ent. Academy*, 3 (5): 30 (Ryukyus).

Specimens examined: 1 ♂ 1 ♀, Kosempo, IX. 1908, VI. 1909, H. SAUTER.

Distribution: Ryukyus, Formosa.

Subfamily **Melanotinae** JACOBSON, 1913**Neodiploconus (Ploconides) castaneus** MIWA, 1930

*Neodiploconus castaneus* MIWA, 1930, *Wien. Ent. Zeitschr.*, XLVII (2): 29 (Formosa).

*Neodiploconus angulatus* var. *castaneus*: MIWA, 1934, *Fauna Elat. Japan*: 215 (Formosa).

*Neodiploconus (Ploconides) castaneus*: ÔHIRA, 1968, *Kontyû*, 36 (4): 366 (Formosa).

Specimens examined: 8 exs., Kosempo, VI. 1908, H. SAUTER; 1 ex., Taihanroku, VII. H. SAUTER; 1 ex., Kanshirei, VI. 1908, H. SAUTER.

Distribution: Formosa.

**Cremnostethus telum** (CANDÈZE, 1893) (Pl. II, Fig. A)

*Melanotus telum* CANDÈZE, 1893, *Elat. nouv.*, V: 49 (Darjiling).

*Cremnostethus telum*: MIWA, 1934, *Fauna Elat. Japan*: 221 (Darjiling, Formosa).

Specimen examined: 1 ex., Fuhosho, IV. 1909, H. SAUTER.

Distribution: Formosa, Darjiling.

**Melanotus (Melanotus) umber** BATES, 1866

*Melanotus umber* BATES, 1866, *Proc. Zool. Soc. London*: 349 (Formosa).

*Melanotus umber*: MIWA, 1934, *Fauna Elat. Japan*: 219 (Formosa).

Specimens examined: 1 ex., Taihanroku, VII. 1908, H. SAUTER; 1 ex., Kanshirei, VII. 1908, H. SAUTER.

Distribution: Formosa.

Subfamily **Agriotinae** FLEUTIAUX, 1939**Chiagosnius obscuripes** (GYLLENHAL, 1817)

*Elater obscuripes* GYLLENHAL, 1817, in SCHÖNBERR. *Syn. Ins.*, III, *Append.*: 131 (Caucasus).

*Agonischius obscuripes*: MIWA, 1934, *Fauna Elat. Japan*: 130, 234, 261 (Japan, Ryukyus, Corea, Formosa, China, Indo-China, Tonkin, Hindustan, Himalaya, Caucasus).

*Chiagosnius obscuripes*: FLEUTIAUX, 1939, *Ann. Soc. Ent. France*, CVIII: 144 (Caucasus, India, China, Japan, Ryukyus).

Specimens examined: 14 exs., Kosempo, VI. 1908, H. SAUTER; 3 exs., Fuhosho, VI. 1909, H. SAUTER; 1 ex., Kanshirei, V. 1908, H. SAUTER.

Distribution: Japan?, Ryukyus?, Formosa, China, Indo-China, Tonkin, India, Hindustan, Himalaya, Caucasus.

**Chiagosnius delaunei fuscomarginatus** (LEWIS, 1896)

- Aphanobius fuscomarginatus* LEWIS, 1896, Ann. Mag. Nat. Hist., (6) XVII: 337 (Ryukyus).  
*Chiagosnius obscuripes* var. *fuscomarginatus*: MIWA, 1934, Fauna Elat. Japan: 236, 262, pl. VIII, f. 22 (Ryukyus, Formosa).  
*Chiagosnius delaunei fuscomarginatus*: ÔHIRA, 1868, Bull. Aichi Univ. Educ., XVIII (Nat. Sci.): 124, f. 20, 21 (Ryukyus, Formosa).  
 Specimens examined: 1 ex., VI. 1908, H. SAUTER; 1 ex., VII. 1909, H. SAUTER.  
 Distribution: Ryukyus, Formosa.

**Ectinus fuscus** (MIWA, 1930) comb. nov.

- Agriotes fuscus* MIWA, 1930, Wien. Ent. Zeitschr., XLVII (2): 93 (Formosa).  
*Agriotes fuscus*: MIWA, 1934, Fauna Elat. Japan: 232 (Formosa).  
 Specimens examined: 2 exs., Kosempo, VII. 1908, XI. 1909, H. SAUTER.  
 Distribution: Formosa.

**Agriotes tonkinensis** (FLEUTIAUX, 1894)

- Silesis tonkinensis* FLEUTIAUX, 1894, Ann. Soc. Ent. France, LXVII: 690 (Tonkin).  
*Agriotides tonkinensis*: MIWA, 1934, Fauna Elat. Japan: 231 (Tonkin, Annam, Formosa).  
*Agriotes tonkinensis*: ÔHIRA, 1966, Kontyû, 34 (4): 332, f. 48, 49 (Formosa, Tonkin, China, Annam, Yunnan).  
 Specimens examined: 35 exs., Kanshirei, 1908, H. SAUTER; 34 exs., VI. 1908, H. SAUTER; 63 exs., Fuhosho, V–VII. 1909, H. SAUTER.  
 Distribution: Formosa, China, Tonkin, Annam, Yunnan.

**Silesis sauteri** MIWA, 1930 (Pl. II, Fig. I)

- Silesis sauteri* MIWA, 1930, Wien Ent. Zeitschr., XLVII (2): 95 (Formosa).  
*Silesis sauteri*: MIWA, 1933, Trans. Nat. Hist. Soc. Formosa, XXIII (124): 9 (Ryukyus).  
*Silesis sauteri*: MIWA, 1934, Fauna Elat. Japan: 239, 265, pl. IX, f. 7 (Ryukyus, Formosa).  
 Specimens examined: 2 exs., Taihanroku, 1908, H. SAUTER; 2 exs., Fuhosho, IV–VII. 1909, H. SAUTER; 3 exs., Kosempo, VII. 1909, H. SAUTER; 11 exs., Taihorinsho, VIII–IX. 1909, H. SAUTER.  
 Distribution: Ryukyus, Formosa.

**Glyphonyx rubricollis rubricollis** MIWA, 1928 (Pl. II, Fig. H)

- Glyphonyx rubricollis* MIWA, 1928, Ins. Mats., III (1): 49, pl. I, f. 16 (Formosa).  
*Glyphonyx rubricollis*: ÔHIRA, 1966, Kontyû, 34 (4): 335, f. 54, 55 (Formosa).  
 Specimens examined: 11 exs., Kosempo, VI. 1908, VII. 1909, H. SAUTER; 4 exs., Fuhosho, V. 1909, H. SAUTER; 4 exs., Taihorinsho, VIII. 1909, H. SAUTER.  
 Distribution: Formosa.

**Glyphonyx castaneus** MIWA, 1931

- Glyphonyx castaneus* MIWA, 1931, Wien, Ent. Zeitschr., XLVII (4): 207 (Formosa).  
*Glyphonyx castaneus*: ÔHIRA, 1966, Kontyû, 34 (1): 337, f. 58, 59 (Formosa).  
 Specimens examined: 2 exs., IX. 1909, H. SAUTER; 6 exs., Taihorinsho, VIII. 1909, H. SAUTER.  
 Distribution: Formosa.

**Glyphonyx sauteri** MIWA, 1931

*Glyphonyx sauteri* MIWA, 1931, Wien. Ent. Zeitschr., XLVII (4): 207 (Formosa).

*Glyphonyx sauteri*: ÔHIRA, 1966, Kontyû, 34 (1): 337 (Formosa).

Specimens examined: 2 exs., Kosempo, VI. 1908, H. SAUTER, 3 exs., Taihorinsho, VIII. 1908, H. SAUTER, 2 exs., Fuhosho, VII. 1909, H. SAUTER.

Distribution: Formosa.

**Glyphonyx longulus** MIWA, 1930 (Pl. II, Fig. G)

*Glyphonyx longulus* MIWA, 1930, Wien. Ent. Zeitschr., XLVII (2): 94 (Formosa).

*Glyphonyx longulus*: MIWA, 1934, Fauna Elat. Japan: 238 (Formosa).

Specimens examined: 4 exs., Kosempo, VI. 1908, H. SAUTER.

Distribution: Formosa.

Subfamily **Cardiophorinae** LENG, 1910**Cardiophorus carduelis** CANDÈZE, 1865

(Pl. II, Fig. J)

*Cardiophorus carduelis* CANDÈZE, 1865, Elat. nouv., I: 39 (Singapore).

*Cardiophorus carduelis*: MIWA, 1934, Fauna Elat. Japan: 210 (Formosa).

Specimen examined: 1 ex., Losempo, 1908, H. SAUTER.

Distribution: Cochinchine, Cambodja, Java, Singapore, Sumatra.

**Cardiotarsus rarus** MIWA, 1927 (Pl. II, Fig. K)

*Cardiotarsus rarus* MIWA, 1927, Ins. Mats., II (2): 108, f. 4 (Formosa).

*Cardiotarsus rarus*: MIWA, 1934, Fauna Elat. Japan: 213 (Formosa).

Specimens examined: 3 ♂♂ 1 ♀, Kosempo, VI-VII. 1908, H. SAUTER.

Distribution: Formosa.

**Part II.****China**Subfamily **Chaleolepidiinae** SCHENKLING, 1925**Paracalais sordidus** (WESTWOOD, 1848) comb. nov. (Plate III, Fig. A)

*Alaus sordidus* WESTWOOD, 1848, Cab. Orient., Ent.: 72, t. 35, f. 9 (India).

*Alaus sordidus*: CANDÈZE, 1857, Mon. Elat., I: 231 (Southeast India).

*Alaus sordidus*: FLEUTIAUX, 1947, Notes d'Ent. Chinoise, XI (8): 298 (India, Burma, Yunnan).

Specimen examined: 1 ♀, Yunnan.

Distribution: Hindustan, Ceylon, Assam, Burma, Laos, Tonkin, Yunnan.

**Paracalais chinensis** sp. nov.

(Plate III, Fig. B)

Female. Length 26 mm, breadth about 6.5 mm. Body black, elongate, almost parallel-sided and moderately convex; dorsal surface clothed with short, fulvous, scale-like pubescence, and intermixed with obscure spots of whitish scale-like pubescence all over; antennae and legs blackish.

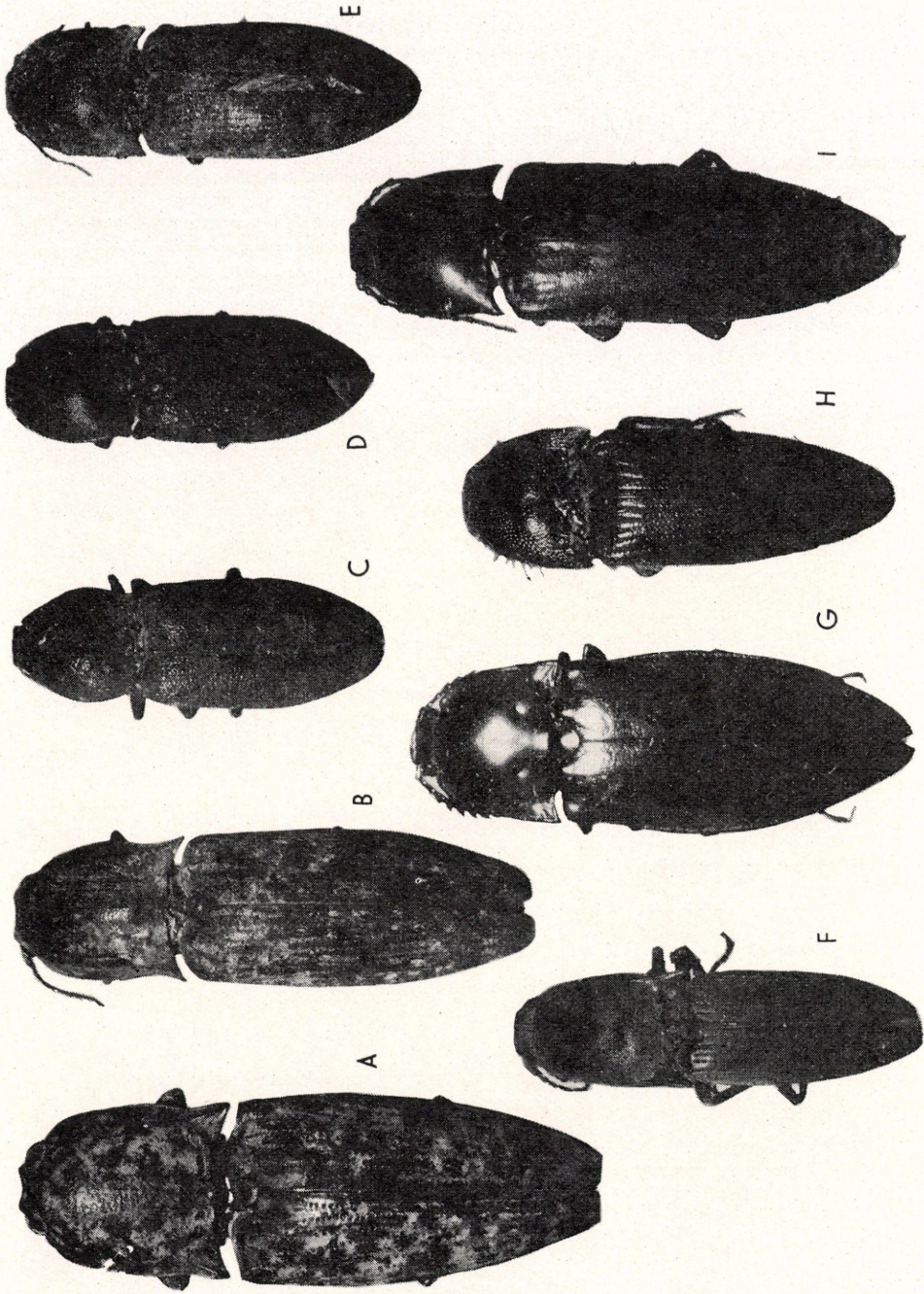


Plate III.

Head subquadrate, broadly and triangularly impressed between eyes; surface sparsely, irregularly and deeply punctate, and scattered with minute punctures among larger ones; clypeal margin strongly impressed between eyes; antennae short, second segment small, globular, third subtriangular and a little shorter than fourth, from fourth to tenth distinctly serrate and apical one oblong-ovate. Pronotum rectangular, clearly longer than its breadth, widest at posterior angles across; the sides sinuate before the posterior angles and weakly rounded at the middle; disc gently convex and more or less elevated longitudinally at the central area and bearing a pair of shallow impressions at the middle; surface sparsely, deeply and uniformly punctate, and scattered with minute punctures among larger ones; posterior angles divergent, each of them acutely projected backwards and having a distinct carina above. Scutellum tongue-shaped, almost flattened and weakly pointed apically. Elytra about 2.3 times as long as basal breadth, widest at middle across, almost parallel-sided from base to apical third, thence weakly rounded and gradually tapering extremities which are weakly truncated; striae defined, punctures in striae deep and regularly punctate, the intervals moderately convex and finely punctate.

Male unknown.

Holotype: ♀, Yunnan, China.

Distribution: South China.

This new species resembles closely *Paracalais putridus putridus* (CANDÈZE, 1857) from Southeast Asia, but can be distinguished from the latter in the following points: the body narrower and slender; the sides of pronotum more rounded and quite absent the mediolongitudinal ridge; the apical portion of elytra weakly and transversely truncate, but not emarginate; a pair of blackish markings on elytra and pronotum not appeared as in *P. putridus putridus* (CANDÈZE, 1857).

#### Subfamily Agrypninae FLEUTIAUX, 1919

#### *Adlocera* (*Adlocera*) *setigera* (BATES, 1866)

*Lacon setiger* BATES, 1866, Proc. Zool. Soc. London, II: 348 (Formosa).

*Adlocera setigera*: FLEUTIAUX, 1927, Faune Colonies Franç.: 74 (Tonkin, Laos, Yunnan).

*Adlocera setigera*: FLEUTIAUX, 1947, Notes d'Ent. Chinoise, XI (8): 260 (Tonkin, Laos).

Specimens examined: 2 exs., Yunnan.

Distribution: Tonkin, Laos, Yunnan, Formosa.

#### *Compsolaeon lapideus* (CANDÈZE, 1857) (Plate III, Fig. C)

*Lacon lapideus* CANDÈZE, 1857, Mon. Elat., I: 141 (Southeast India).

*Adlocera lapidea*: FLEUTIAUX, 1927, Faune Colonies Franç.: 85, pl. I, f. 14 (Tonkin, Laos, Yunnan).

*Compsolaeon lapideus*: FLEUTIAUX, 1947, Notes d'Ent. Chinoise XI (8): 286 (Indo-China).

Specimen examined: 1 ex., Yunnan.

Distribution: Tonkin, Laos, Yunnan, Malacca, Southeast India.

#### *Compsolaeon sinensis* (CANDÈZE, 1857) (Plate III, Fig. D)

*Lacon sinensis* CANDÈZE, 1857, Mon. Elat., I: 139 (China).

*Adlocera sinensis*: FLEUTIAUX, 1927, Faune Colonies Franç.: 84 (Tonkin, Laos, Cambodia, Annam, Central China, Burma, Siam, Bengal, Sumatra).

*Compsolacon sinensis*: FLEUTIAUX, 1947, Notes d'Ent. Chinoise, XI (8): 285 (South-east Asia, Sumatra).

Specimen examined: 1 ex., Yunnan.

Distribution: Southeast Asia, Sumatra.

Subfamily **Conoderinae** FLEUTIAUX, 1919

**Anathesis laconoides** CANDÈZE, 1864 (Plate III, Fig. E)

*Anathesis laconoides* CANDÈZE, 1864, Elat. nouv., I: 21 (Malay).

*Anathesis laconoides*: FLEUTIAUX, 1927, Encycl. Ent., Col.: 19 (Siam, Malacca, Burma, Hainan, Sumatra).

Specimens examined: 4 exs., Yunnan.

Distribution: Hainan, Yunnan, Malacca, Burma, Tonkin, Laos, China, Sumatra, New Guinea.

**Heteroderes macroderes** (CANDÈZE, 1859) (Fig. 2. C; Plate III, Fig. F)

*Heteroderes macroderes* CANDÈZE, 1859, Mon. Elat., II: 358 (Hindustan).

*Heteroderes macroderes*: FLEUTIAUX, 1927, Encycl. Ent., Col.: 25 (Tonkin, Laos, Hindustan, Burma, Assam, Central China).

Specimen examined: 1 ♂, Yunnan.

Distribution: Hindustan, Darjiling, Burma, Laos, Tonkin, Assam, China.

Subfamily **Oxynopterinae** SCHENKLING, 1925

**Campsosternus dohrnii** WESTWOOD, 1848 (Fig. 2, A; Plate III, Fig. G)

*Campsosternus Dohrnii* WESTWOOD, 1848, Cab. Orient., Ent.: 71, t. 35, f. 2 (Assam).

*Campsosternus Dohrnii*: FLEUTIAUX, 1927, Faune Colonies Franç.: 113 (Tonkin, Laos, Annam, Assam, Burma).

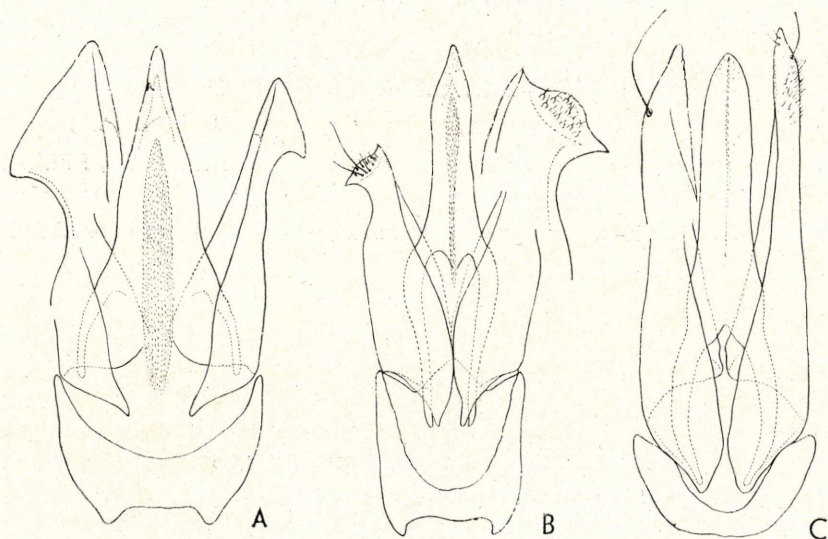


Fig. 2. A: Aedeagus of *Campsosternus dohrnii* WESTWOOD, 1848. B: Ditto, *Ludigenus politus* (CANDÈZE, 1863). C: Ditto, *Heteroderes macroderes* (CANDÈZE, 1859)

*Campsosternus Dohrni*: FLEUTIAUX, 1947, Notes d'Ent. Chinoise, XI (8): 317 (Tonkin).

Specimens examined: 2 ♂♂ Yunnan.

Distribution: Yunnan, Annam, Assam, Burma, Tonkin, Laos.

***Campsosternus auratus* (DRURY, 1773)**

*Elater auratus* DRURY, 1773, Illustr. Ins., II: 65, t. 35, f. 3 (China).

*Campsosternus auratus*: FLEUTIAUX, Notes d'Ent. Chinoise, XI (8): 319 (China, Indo-China).

Specimens examined: 7 exs., Yunnan; 6 exs. Kwei-tshou; 1 ex., Shanghai.

Distribution: Ryukyus, Formosa, China, Hainan, Tonkin, Annam, Cambodia.

Subfamily **Denticollinae** SCHENKLING, 1927

***Hemiops flava* LAPORTE DE CASTELNAU, 1836**

*Hemiops flava* LAPORTE DE CASTELNAU, 1836, in SIBERMANN Rev. Ent., IV: 15 (China, Java, Malay, Indo-China).

*Hemiops flava*: CANDÈZE, 1863, Mon. Elat., IV: 494, t. 6, f. 7 (China, Indo-China, Malay).

*Hemiops flava*: FLEUTIAUX, 1918, Ann. Soc. Ent. France, LXXXVII: 275 (Laos, Tonkin).

Specimen examined: 1 ex., Kwei-tshou.

Distribution: South Asia.

Subfamily **Melanotinae** JACOBSON, 1913

***Melanotus (Melanotus) fuscus* (FABRICIUS, 1801) (Plate III, Fig. H.)**

*Elater fuscus* FABRICIUS, 1801, Syst. El., II: 228 (Amboina).

*Melanotus fuscus*: CANDÈZE, 1860, Non. Elat., III: 335 (Southeast India).

*Melanotus fuscus*: FLEUTIAUX, 1933, Ann. Soc. Ent. France, CII: 225 (Indo-China, Hindustan, Ceylon, Bengal, Burma).

Specimens examined: 3 exs., Yunnan.

Distribution: Southeast Asia.

Subfamily **Elateriane** FLEUTIAUX, 1936

***Ludigenus politus* (CANDÈZE, 1863) (Fig. 2, B; Plate III, Fig. I)**

*Ludigenus politus* CANDÈZE, 1863, Mon. Elat., IV: 326 (Borneo, Siam, Philippines).

*Ludigenus politus*: FLEUTIAUX, 1936, Ann. Soc. Ent. France, CV: 300 (Indo-China).

Specimens examined: 10 exs., Yunnan.

Distribution: Sunda Is., Philippines, Yunnan, Tonkin, Annam, Laos, Cambodia, Formosa.

## Part III.

### Vietnam

Subfamily **Chalcolepidiinae** SCHENKLING, 1925

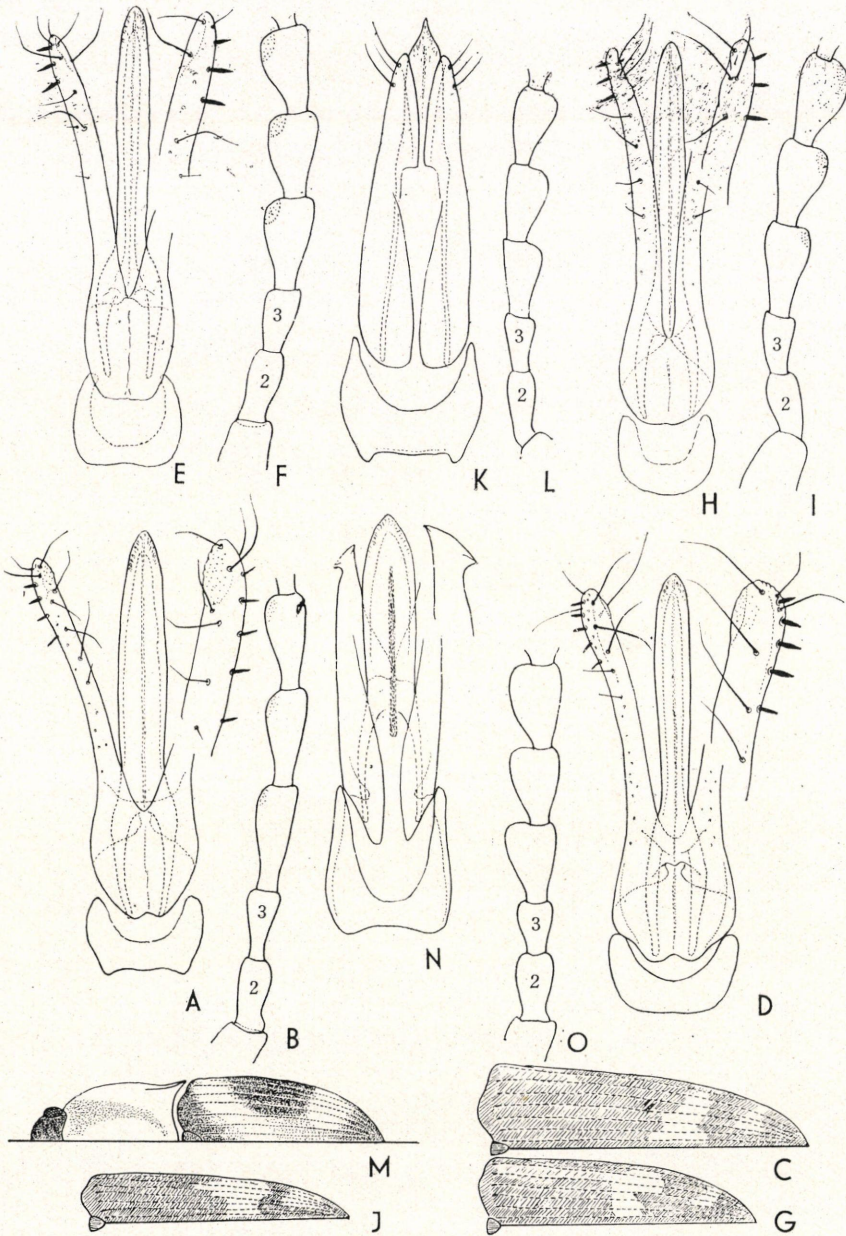
***Paracalais sordidus* (WESTWOOD, 1848)**

*Alaus sordidus* WESTWOOD, 1848, Cab. Orient., Ent.: 72, t. 35, f. 9 (India).

*Alaus sordidus*: FLEUTIAUX, 1927, Faune Colonies Franç.: 106 (Tonkin, Laos).

*Alaus sordidus*: FLEUTIAUX, 1947, Notes d'Ent. Chinoise, XI (8): 298 (India, Burma, Yunnan).

Plate IV.



Specimens examined: North Vietnam (Lao-Kay), 1 ♀, 20. IX. 1963, T. Pócs; ditto, 1 ♀, 21. IX. 1963, T. Pócs; ditto (Ninh-Binh), 1 ♂, 13. X. 1963, T. Pócs. All the specimens are captured by lamplight.

Distribution: India, Ceylon, Assam, Burma, Laos, Vietnam, China (Yunnan).

Subfamily **Agrypninae** FLEUTIAUX, 1919

**Adelocera lupinosa** (CANDÈZE, 1857) (Plate V., Fig. A)

*Lacon lupinosus* CANDÈZE, 1857, Mon. Elat., I: 130 (India Orientalis).

*Lacon lupinosus*: FLEUTIAUX, 1918, Ann. Soc. Ent. France LXXXVII: 193 (Tonkin).

*Adelocera lupinosa*: FLEUTIAUX, 1927, Faune Colonies Franç.: 79 (Cochinchina).

*Adelocera lupinosa*: FLEUTIAUX, 1947, Notes d'Ent. Chinoise, XI (8): 266 (Burma, Thailand, Cambodia, Cochinchina, Borneo).

Specimen examined: North Vietnam (Ha-Tinh), 1 ex., 13. VIII. 1963, T. Pócs.

Distribution: Oriental India, Burma, Thailand, Cambodia, Vietnam, Borneo.

**Adelocera inops** (CANDÈZE, 1874) (Plate V, Fig. B)

*Lacon inops* CANDÈZE, 1874, Révis. Mon. Elat.: 67 (Malacca, Thailand, Borneo).

*Lacon inops*: FLEUTIAUX, 1918, Ann. Soc. Ent. France, LXXXVII: 193 (Annam, Cambodia, Cochinchina).

*Adelocera inops*: FLEUTIAUX, 1927, Faune Colonies Franç.: 79, pl. II, fig. 21 (Cochinchina, Annam, Cambodia, Tonkin).

*Adelocera inops*: FLEUTIAUX, 1947, Notes d'Ent. Chinoise, XI (8): 265 (Indo-China).

This species is closely allied to *Adelocera lupinosa* (CANDÈZE, 1857), but can be distinguished from the latter by the body being narrower, smaller (length 8 mm) and more parallel-sided, the surface usually reddish-brown, the irregular patterns on the elytra very inconspicuous, the sides of the pronotum not crenate except near the posterior angles which have a few crenations.

Specimens examined: Indo-China, 2 exs., without exact date and collector.

Distribution: Malay Pen., Thailand, Cambodia, Vietnam, Borneo.

**Adelocera tosta** (CANDÈZE, 1857) (Plate V, Fig. C)

*Lacon tostus* CANDÈZE, 1857, Mon. Elat., I: 129 (Oriental India).

*Lacon tostus*: CANDÈZE, 1888, Ann. Mus. Civ. St. Nat. Genova, II, VI: 669 (Burma).

*Adelocera tosta*: FLEUTIAUX, 1927, Faune Colonies Franç.: 78, pl. II, f. 24 (Tonkin, Laos, Annam, Cambodia).

*Adelocera tosta*: FLEUTIAUX, 1942, Ark. für Zool., 33A (18): 3 (Burma).

*Adelocera tosta*: FLEUTIAUX, 1947, Notes d'Ent. Chinoise, XI (8): 265 (Southeast Asia, Borneo, Sumatra).

Specimen examined: Indo-China, 1 ex., without exact date and collector.

Distribution: India, Southeast Asia, Borneo, Sumatra, Java, Formosa.

**Meristhus (Meristhus) biguttatus** CANDÈZE, 1893

*Meristhus biguttatus* CANDÈZE, 1893, Elat. nouv., V: 10 (Perak in Malasia).

*Meristhus biguttatus*: FLEUTIAUX, 1927, Faune Colonies Franç.: 88, pl. II, f. 32, 34 (Tonkin).

Length 3 mm. Body brown to brownish-yellow, almost parallel-sided and convex; surface clothed with short, rather narrow, erect, spine-like pubescence; antennae and legs pale-yellow. Pronotum quadrate, parallel-sided, a little longer

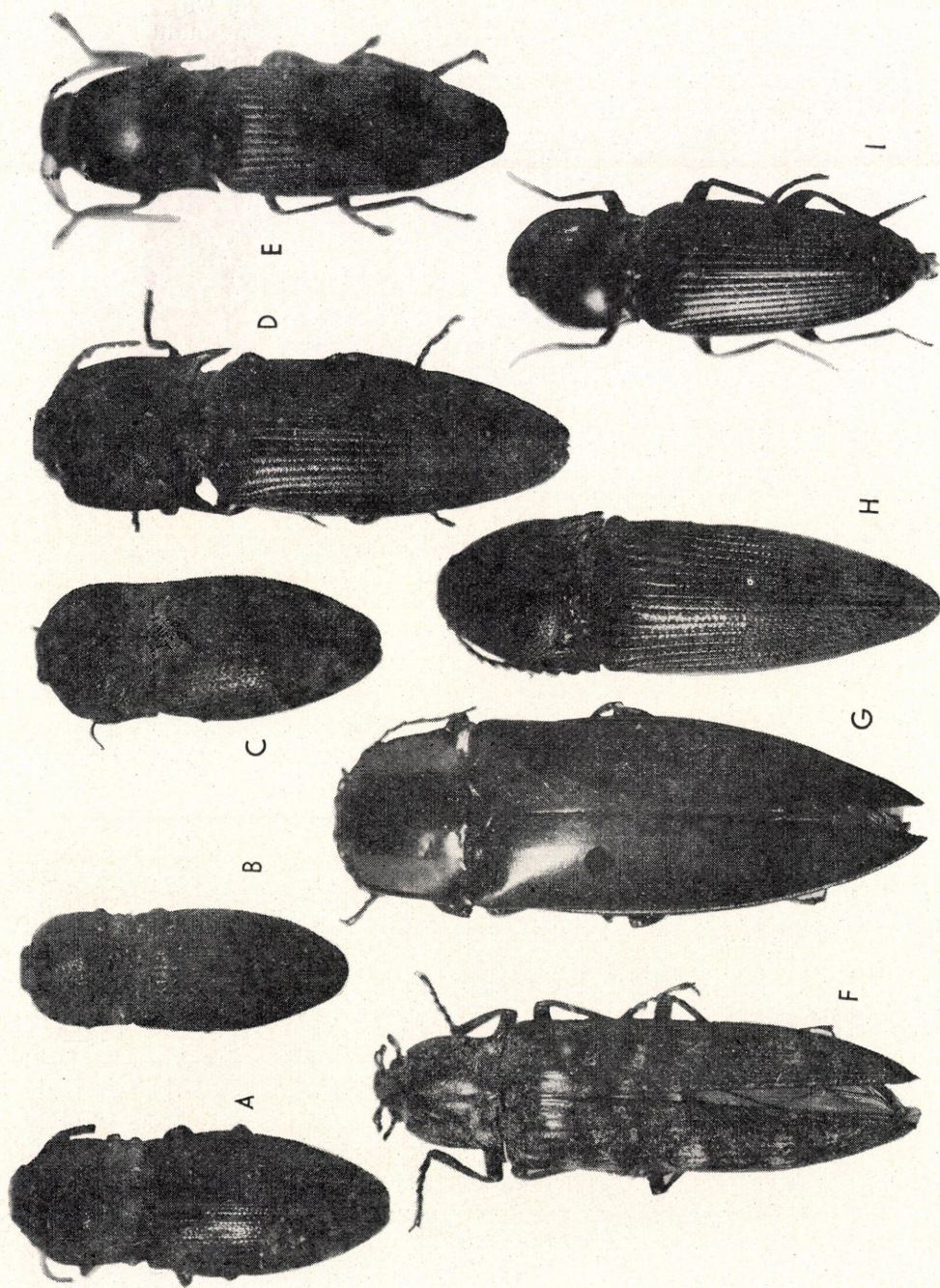


Plate V.

than its breadth; the posterior angles short, obtusely angulated, without carina above; scutellum bears a very conspicuous longitudinal ridge at middle; elytra having a pair of obscure, subovate, pale-yellow patches near the apices.

Specimen examined: Vietnam (Lao-Cai), 1 ex., 21. IX. 1963, T. Pócs.

Distribution: Perak in Malaysia, Vietnam.

**Meristhus (Meristhus) pistrinarius** CANDÈZE, 1857

*Meristhus pistrinarius* CANDÈZE, 1857, Mon. Elat., I: 164 (Oriental India).

*Meristhus pistrinarius*: CANDÈZE, 1888, Ann. Mus. Civ. St. Nat. Genova, II, VI: 671 (Burma).

Specimen examined: North Vietnam (Nghe-An), 1 ex., 26. VIII. 1963, T. Pócs.

Distribution: Oriental India, Burma, Vietnam.

Subfamily **Conoderinae** FLEUTIAUX, 1919

**Pachyderes niger** CANDÈZE, 1878 (Plate V, Fig. D)

*Pachyderes niger* CANDÈZE, 1878, Elat. nouv., II: 14 (Burma).

*Pachyderes niger*: CANDÈZE, 1888, Ann. Mus. Civ. St. Nat. Genova, II, VI: 673 (Burma).

*Pachyderes niger*: CANDÈZE, 1890, Ann. Mus. Civ. St. Nat. Genova, II, X: 776 (Burma).

*Pachyderes niger*: FLEUTIAUX, 1918, Ann. Soc. Ent. France, LXXXVII: 205 (Tonkin).

*Pachyderes niger*: FLEUTIAUX, 1929, Ency. Ent., Col.: 23 (Tonkin, Laos, Cochinchina).

Specimens examined: North Vietnam (Ha-Tinh), 1 ex., 13. VIII. 1963, T. Pócs. China (Yunnan), 1 ex., without exact date and collector.

Distribution: India, Bengal, Burma, Thailand, Vietnam, Yunnan.

**Anathesis laconoides** CANDÈZE, 1864

*Anathesis laconoides* CANDÈZE, 1864, Elat. nouv., I: 21 (Malay).

*Anathesis laconoides*: FLEUTIAUX, 1918, Ann. Soc. Ent. France, LXXXVII: 205 (Indo-China, Laos, Tonkin).

*Anathesis laconoides*: FLEUTIAUX, 1929, Ency. Ent., Col.: 19 (Thailand, Malacca, Burma, Indo-China, Hainan, Sumatra).

*Anathesis laconoides*: FLEUTIAUX, 1942, Ark. für Zool., 33A(18): 4 (Burma).

Specimens examined: North Vietnam (Ha-Tinh), 1 ♀, 13. VIII. 1963, T. Pócs. Indo-China, 1 ex., without exact date and collector.

Distribution: Thailand, Burma, Malacca, Vietnam, Hainan, China (Yunnan), Formosa, Sumatra.

**Heteroderes triangularis** (ESCHSCHOLTZ, 1822) (Plate IV, Figs. A, B, C)

*Elatер triangularis* ESCHSCHOLTZ, 1822, Entomogr., I: 73 (Philippines).

*Heteroderes triangularis*: CANDÈZE, 1859, Mon. Elat., II: 361 (China).

*Heteroderes triangularis*: CANDÈZE, 1875, Ann. Soc. Ent. Belg., XVIII: 71 (Philippines).

*Heteroderes triangularis*: FLEUTIAUX, 1918, Ann. Soc. Ent. France, LXXXVII: 210 (Laos, Annam, Cambodia, Cochinchina).

*Heteroderes triangularis*: FLEUTIAUX, 1929, Ency. Ent., Col.: 26 (Indo-China).

Length 4.5–6 mm. Body moderately elongate and more or less depressed above; surface dusky-brown to dark reddish-brown except some parts of anterior and posterior angles of pronotum, scutellum and markings on elytra which are red-

dish-brown to yellowish-brown; antennae brown; legs pale yellow-brown; clothed with fulvous pubescence all over. Elytra usually having two pairs of markings, viz. a pair of transverse markings situated at the apical third and the other subovate ones farther posteriorly, moreover a pair of obscure markings often appear near the humeral angles as figured.

Specimens examined: North Vietnam (Ha-Tinh), 38 exs., 13–19. VIII. 1963, T. Pócs.

Distribution: Cambodia, Laos, Vietnam, China, Philippines.

***Heteroderes poesi* sp. nov.**

(Plate IV, Fig. D)

Male. Length 4.5 mm, breadth about 1.3 mm. Body small and oblong-ovate, almost parallel-sided and more or less depressed above; surface entirely black, excepting antennae, anterior and posterior angles and posterior margin of pronotum are brownish; legs pale yellow-brown; rather opaque and clothed with short, cinereo-helvolus pubescence all over.

Head subquadrate, gently convex between eyes, almost flattened on vertical portion between antennae; surface densely and rather coarsely punctate; clypeal margin entire, well ridged, weakly rounded and slightly impressed at middle; antennae short, not reaching the posterior angles of pronotum, second segment short, subcylindrical, third subclavate and slightly longer than second, these two together distinctly longer than fourth, from fourth to tenth weakly serrate. Pronotum subquadrate, almost as long as broad, widest at middle, the sides subparallel and slightly sinuate before posterior angles; disk gently convex, densely and coarsely covered with two kinds of punctures (minute ones scattering among larger ones); posterior angles short, projecting behind and acutely pointed apically, not divergent, each bears a short, distinct carina above. Scutellum oblong-ovate, a little convex at middle, punctulate and pubescent. Elytra about twice length of the basal breadth; sides almost parallel from base to apical third, thence rounded and gradually tapering toward extremities which are weakly rounded; striae well defined, punctures in striae deep, rather coarsely and rugosely set; intervals slightly convex except the sutural one, which is more clearly elevated than the others, punctulate and being minutely scabrous. Legs stout, the fourth segment of hind tarsus carrying a membranous lobe beneath; claws simple.

Holotype ♂, North Vietnam (Ha-Tinh), 15. VIII. 1963, T. Pócs leg.

Distribution: North Vietnam.

This new species somewhat resembles *Heteroderes triangularis* (ESCHSCHOLTZ, 1822), but can be distinguished from the latter by the following points: the body black, smaller and more parallel-sided, and clothed with cinereo-helvolus pubescence, the punctures on the disk of pronotum more evenly and regularly set, the posterior angles of pronotum weakly projected behind, and the elytral maculations quite lacking.

***Conoderus dohrni* CANDÈZE, 1878 (Plate V, Fig. E)**

*Monocrepidius dohrni* CANDÈZE, 1878, *Elat. nouv.*, II: 17 (Himalaya).

*Conoderus trifasciatus* FLEUTIAUX, 1918, *Bull. Mus. Hist. Nat. Paris*, XXIV; 215 (Tonkin).

*Conoderus dohrni*: FLEUTIAUX, 1929, Ency. Ent., Col.: 32 (Tonkin, Laos).

Specimens examined: North Vietnam (Ha-Tinh), 3 exs., 19. VIII. 1963, T. Pócs.

Distribution: Himalaya, Burma, Vietnam, Laos, China.

***Prodrasterius collaris*** (CANDÈZE, 1859) (Plate IV, Figs. E, F, G)

*Drasterius collaris* CANDÈZE, 1859, Mon. Elat., II: 427 (Oriental India).

*Drasterius collaris*: FLEUTIAUX, 1918, Bull. Mus. Hist. Nat. Paris, XXIV: 216 (Tonkin).

*Drasterius collaris*: FLEUTIAUX, 1918, Ann. Soc. Ent. France LXXXVII: 212 (Annam, Cochinchina, Tonkin, Laos).

*Prodrasterius collaris*: FLEUTIAUX, 1929, Ency. Ent., Col.: 36 (Tonkin, Laos).

Length 4–5 mm. The general characters of this species are similar to *Heteroderes triangularis* (ESCHSCHOLTZ, 1822), but can be distinguished by the body narrower and smaller, the disk of the pronotum simply punctate. Also allied to *Prodrasterius brahminus* (CANDÈZE, 1859), but can be distinguished by the markings on the elytra, which are more complicated and normally forming a pair of indefinite patches near the humeral angles as figured.

Specimens examined: Vietnam (Ha-Tinh), 49 exs., 14–25. VIII. 1963, T. Pócs; ditto (Hanoi), 1 ex., 30. X. 1963, T. Pócs.

Distribution: India, Burma, Laos, Vietnam.

***Prodrasterius candezei*** (FLEUTIAUX, 1918) (Plate IV, Figs. H, I, J)

*Drasterius candezei* FLEUTIAUX, 1918, Ann. Soc. Ent. France, LXXXVII: 213 (Annam, Cochinchina).

*Prodrasterius candezei*: FLEUTIAUX, 1929, Ency. Ent., Col.: 37 (Annam, Cambodia).

The general characters of this species are closely allied to *Prodrasterius collaris* (CANDÈZE, 1859), but differs by the smaller body (length 3.5 mm), the pronotum more clearly narrowed anteriorly, the disk of the pronotum more evenly punctate, the markings of the posterior portion on the elytra larger and more conspicuous and normally not extending toward the humeral angles as figured.

Specimens examined: North Vietnam (Ha-Tinh), 7 exs., 14–15. VIII. 1963, T. Pócs; ditto (Nghe-An), 7 exs., 25–26. VIII. 1963, T. Pócs.

Distribution: Vietnam.

***Prodrasterius illinitus*** CANDÈZE, 1889

*Drasterius illinitus* CANDÈZE, 1889, Elat. nouv., IV: 33 (Borneo).

*Drasterius illinitus*: FLEUTIAUX, 1918, Bull. Mus. Hist. Nat. Paris, XXIV: 217 (Tonkin).

*Prodrasterius illinitus*: FLEUTIAUX, 1929, Ency. Ent., Col.: 36 (Tonkin).

Specimen examined: North Vietnam (Ha-Tinh), 1 ex., 19. VIII. 1963, T. Pócs

Distribution: Borneo, Sumatra, Vietnam.

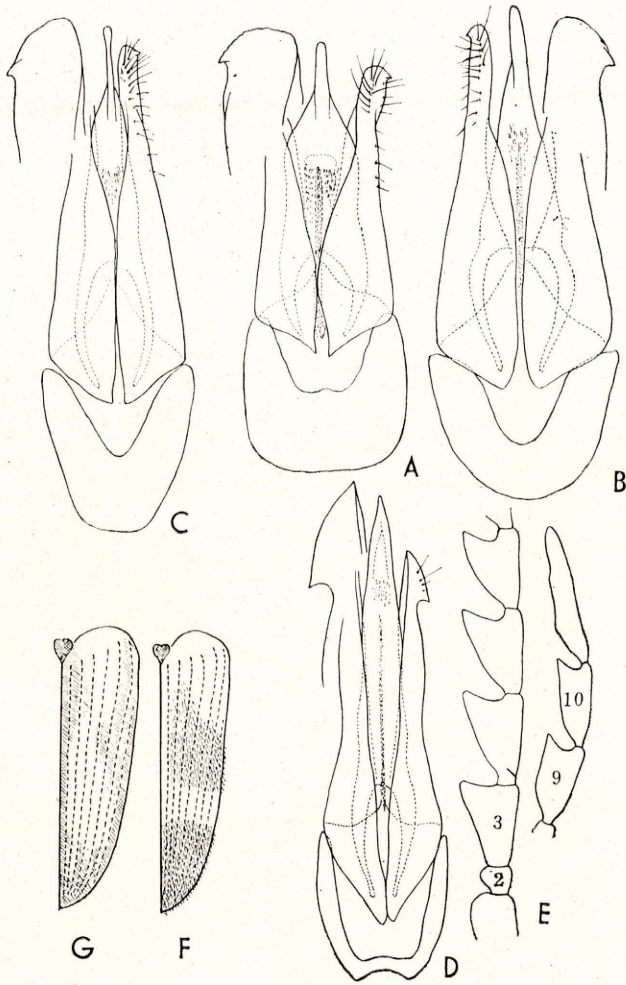
Subfamily **Negastriinae** NAKANE & KISHII, 1956

***Negestrius indicus*** (MOTSCHULSKY, 1858) comb. nov. (Plate IV, Figs. K, L)

*Cryptohypnus indicus* MOTSCHULSKY, 1858, Etud. Ent., VII: 57 (Burma).

*Zorochrus indicus*: FLEUTIAUX, 1930, Bull. Mus. Hist. Nat. Paris, (2) II: 641 (Cochinchina, Tonkin).

Plate VI.



Length 3 mm. Body oblong-ovate; pitchy black and tinged with an aeneous colour; basal three segments of antennae and legs brownish-yellow; clothed with cinereous pubescence all over. Pronotum trapezoid; the sides subparallel at posterior half, thence clearly narrowed toward anterior angles; disk strongly convex, entirely micro-reticulate and usually having many small tubercles along median longitudinal area; posterior angles short, not divergent, each bears a distinct carina above. Adeagus and the basal segments of the antenna as figured.

Specimens examined: North Vietnam (Ha-Tinh), 22 exs., 19. VIII. 1963, T. Pócs.

Distribution: Bengal, Burma, Vietnam.

**Negastrius bobilloti** (FLEUTIAUX, 1930) comb. nov.

*Zorochrus Bobilloti* FLEUTIAUX, 1930, Bull. Mus. Hist. Nat. Paris, (2) II: 641 (Tonkin).

The general characters of this species are related to *Negastrius indicus* (MOTSCHULSKY, 1858), but can be distinguished by the smaller body (length 2–2.5 mm), the pronotum subquadrate and rounded at the sides, but not clearly tapering anteriorly, the posterior angles obscurely reddish and each bears a feeble carina above.

Specimens examined: North Vietnam (Ha-Tinh), 6 exs., 14–19. VIII. 1963, T. Pócs.

Distribution: Vietnam.

**Negastrius mechanicus** (FLEUTIAUX, 1925) comb. nov. (Plate IV, Fig. M)

*Hypnoidus mechanicus* FLEUTIAUX, 1925, Bull. Soc. Ent. France: 184 (Tonkin).

*Zorochrus mechanicus* FLEUTIAUX, 1930, Bull. Mus. Hist. Nat. Paris, (2) II: 642 (Tonkin).

Specimen examined: North Vietnam (Ha-Tinh), 1 ex., 19. VIII. 1963, T. Pócs.

Distribution: North Vietnam.

Subfamily **Oxynopterinae** SCHENKLING, 1925

**Pectocera tonkinensis** FLEUTIAUX, 1918 (Plate V, Fig. F)

*Pectocera tonkinensis* FLEUTIAUX, 1918, Ann. Soc. Ent. France, LXXXVII: 202 (Tonkin, Laos).

*Pectocera tonkinensis*: FLEUTIAUX, 1927, Faune Colonies Franç.: 118 (Tonkin, Laos, Annam).

*Pectocera tonkinensis*: FLEUTIAUX, 1947, Notes d'Ent. Chinoise, XI (8): 311 (Tonkin, Laos, Annam).

Specimen examined: North Vietnam (Tonkin), 1 ♀, without exact date, FURHSTORFER.

Distribution: Vietnam, Laos.

**Camposternus latiusculus** CANDÈZE, 1874

*Camposternus latiusculus* CANDÈZE, 1874, Révis. Mon. Elat.: 193 (Malacca, Borneo).

Length 20 mm. Body glabrous and very shining; oblong-ovate and more or less depressed above; head, pronotum and scutellum tinged with bluish lustre, and elytra golden-green with an iridescent tinge; antennae and legs blackish-brown.

The general characters of this species resemble *Campsosternus dohrnii* (WESTWOOD, 1848), but it can be distinguished by the missing reddish bands of the sides of the pronotum and the more clearly striated elytra with an iridescent lustre.

Specimen examined: Tonkin (Than Moi), 1 ex., without exact date, FURHSTORFER.

Distribution: Malacca, Borneo, Vietnam.

***Campsosternus furhstorferi* SCHWARZ, 1902 (Plate V, Fig. G)**

*Campsosternus Furhstorferi* SCHWARZ, 1902, Deutsch. Ent. Zeitschr.: 318 (Tonkin).  
*Campsosternus Furhstorferi*: FLEUTIAUX, 1927, Faune Colonies Franç. 113 (Cambodia, Laos, Tonkin).

*Campsosternus Furhstorferi*: FLEUTIAUX, 1947, Notes d'Ent. Chinoise, XI (8): 316 (Cambodia, Laos, Tonkin).

Specimen examined: North Vietnam (Tonkin), 1 ex., without exact date, FURHSTORFER.

Distribution: Cambodia, Laos, North Vietnam.

Subfamily **Elaterinae** FLEUTIAUX, 1936

***Ludigenus politus* CANDÈZE, 1863**

*Ludigenus politus* CANDÈZE, 1863, Mon. Elat., IV: 326 (Borneo, Thailand, Philippines).

*Ludigenus politus*: FLEUTIAUX, 1936, Ann. Soc. Ent. France, CV: 300 (Indo-China).

Specimen examined: North Vietnam (Tonkin), 1 ♂ without exact date, FURHSTORFER.

Distribution: Burma, Cambodia, Sumatra, Celebes, Borneo, Philippines, Laos, Vietnam, China (Yunnan), Formosa.

Subfamily **Melanotinae** JACOBSON, 1913

***Melanotus (Spheniscosomus) albivellus* CANDÈZE, 1864, (Plate V, Fig. H)**

*Melanotus albivellus* CANDÈZE, 1864, Elat. nouv., I: 48 (Java).

*Melanotus (Spheniscosomus) albivellus*: FLEUTIAUX, 1933, Ann. Soc. Ent. France, CII: 234 (Tonkin, Laos).

Specimen examined: North Vietnam (Tonkin), 1 ex., without exact date, FURHSTORFER.

Distribution: Sumatra, Java, Borneo, Philippines, Vietnam, Laos.

***Neodiploconus (Pleconides) angulatus* (CANDÈZE, 1860)**

*Diploconus angulatus* CANDÈZE, 1860, Mon. Elat., III: 297 (Hong-Kong).

*Neodiploconus (Pleconides) angulatus*: FLEUTIAUX, 1933, Ann. Soc. Ent. France, CII: 213 (Tonkin, Cambodia, Annam).

Specimens examined: North Vietnam (Tonkin), 2 exs., without exact date, FURHSTORFER.

Distribution: Cambodia, Malay Pen., Singapore, Vietnam, Hong-Kong, Formosa.

Subfamily **Agriotinae** FLEUTIAUX, 1939

***Agriotes tonkinensis* (FLEUTIAUX, 1894) (Plate IV, Figs. N. O)**

*Silesis tonkinensis* FLEUTIAUX, 1894, Ann. Soc. Ent. France, LXIII: 690 (Tonkin).

*Agonischius tonkinensis*: FLEUTIAUX, 1902, Ann. Soc. Ent. France, LXXI: 577 (Tonkin).

*Agriotides tonkinensis*: SCHWARZ, 1907, in WYTSMAN, Gen. Ins., Elat.: 274 (Tonkin).  
*Agriotes tonkinensis*: FLEUTIAUX, 1939, Ann. Soc. Ent. France, XVIII: 129 (Tonkin, China, Formosa).

Specimens examined: North Vietnam (Tonkin), 11 exs., without exact date, FURHSTORFER.

Distribution: North Vietnam, China (Yunnan), Formosa.

Subfamily **Cardiophorinae** LENG, 1910

**Diceronychus dentatus** (FLEUTIAUX, 1931) comb. nov. (Plate V, Fig. I)

*Platynychus dentatus* FLEUTIAUX, 1931, Bull. Soc. Zool. France, LVI: 320, f. 3. (Laos).

Specimen examined: North Vietnam (Ha-Tinh), 4 exs., 19. VIII. 1963, T. Pócs.

Distribution: North Vietnam, Laos.

**Paraplatynychus costatus** (FLEUTIAUX, 1931) comb. nov.

*Cardiophorus costatus* FLEUTIAUX, 1918, Ann. Soc. Ent. France, LXXXVII: 229 (Cambodia, Tonkin, Laos).

*Platynychus (Paraplatynychus) costatus*: FLEUTIAUX, 1931, Bull. Soc. Zool. France, LVI: 327 (Cambodia).

Specimen examined: North Vietnam (Ha-Tinh), 1 ex., 19. VIII. 1963, T. Pócs.

Distribution: Cambodia, Laos, North Vietnam.

## Part IV.

### Laos

Subfamily **Chaleolepidiinae** SCHENKLING, 1925

**Paracalais sordidus** (WESTWOOD, 1848)

Specimen examined: 1 ♀, without exact date and collector.

Distribution: Vide in Part III.

**Alaotypus distinctus** (FLEUTIAUX, 1920) comb. nov. (Plate VII, Fig. A)

*Adelocera distincta* FLEUTIAUX, 1920, Bull. Soc. Ent. France: 114 (Laos).

*Lacon distinctus*: FLEUTIAUX, 1947, Notes d'Ent. Chinoise, XI (8): 274 (Tonkin).

FLEUTIAUX (1927, 1947) placed this species to the genus *Lacon* LAPORTE DE CASTELNAU, 1836, but under the examined species no one is grooved on the full length of the prosternal sutures and each groove is usually closed before the procoxal cavity. This character is believed to be one of the peculiarities of the genus *Alaotypus* SCHWARZ, 1902.

Specimen examined: 1 ♀, without exact date and collector.

Distribution: North Vietnam, Laos.

**Lenelater mucronatus** (CANDÈZE, 1857) comb. nov.

(Plate VI, Fig. A, Plate VII, Fig. D)

*Agrypnus mucronatus* CANDÈZE, 1857, Mon. Elat., I: 42 (Borneo).

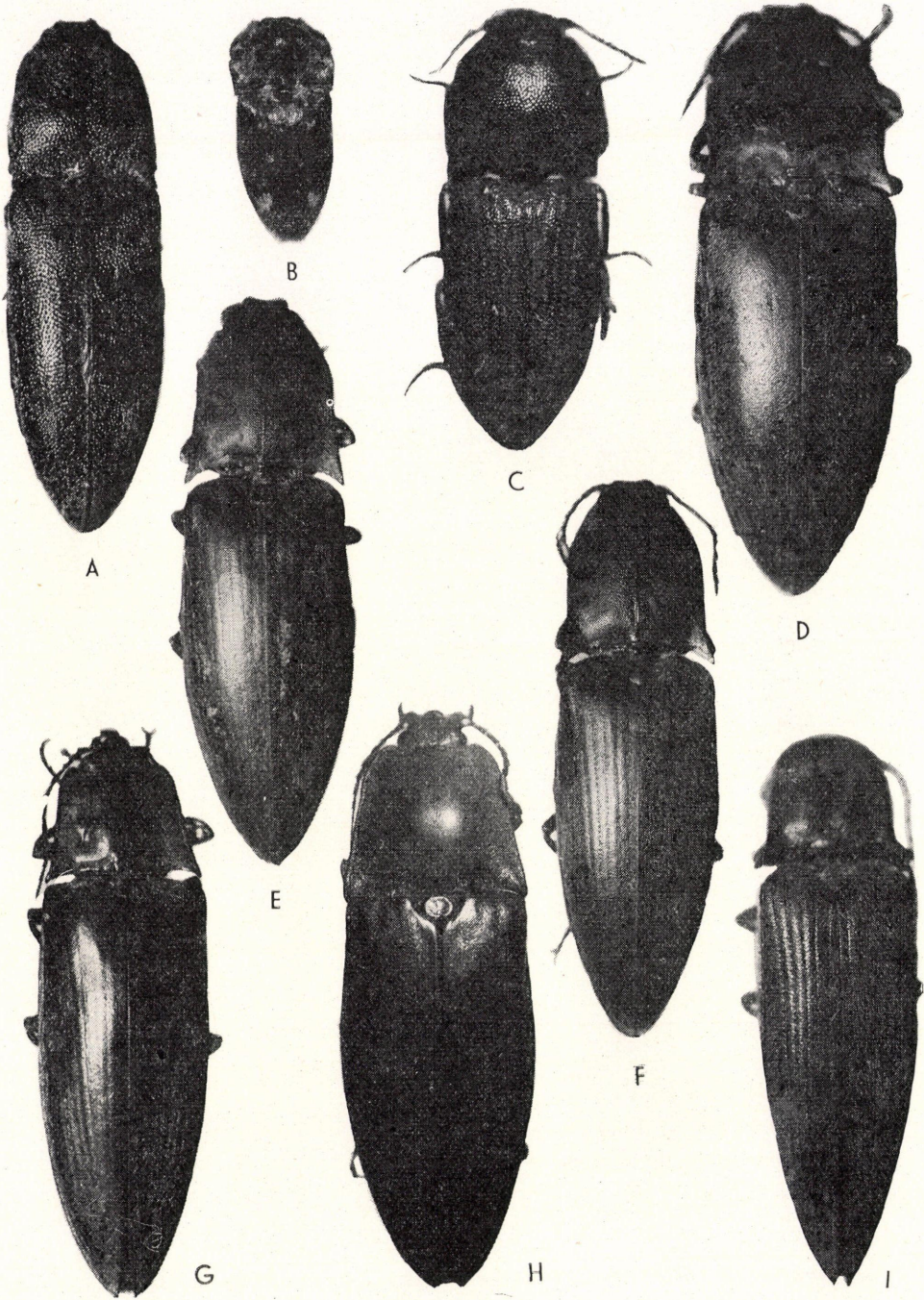
*Agrypnus mucronatus*: FLEUTIAUX, 1927, Faune Colonies Franç.: 59 (Laos).

*Agrypnus mucronatus*: FLEUTIAUX, 1947, Notes d'Ent. Chinoise, XI (8): 289 (Laos).

Specimens examined: 4 exs., without exact date and collector.

Distribution: Borneo, Vietnam, Laos.

Plate VII.



**Lanelater fusiformis** (CANDÈZE, 1857) comb. nov.

(Plate VI, Fig. B, Plate VII, Fig. E)

*Agrypnus fusiformis* CANDÈZE, 1857, Mon. Elat., I: 39 (China).*Agrypnus fusiformis*: FLEUTIAUX, 1927, Faune Colonies Franç: 60, pl. I, f. 8 (Cochin-china, Annam, Tonkin).*Agrypnus fusiformis*: FLEUTIAUX, 1947, Notes d'Ent. Chinoise, XI (8): 290 (China, Indo-China).

Specimens examined: 1 ♂ 2 ♀♀ without exact date and collector.

Distribution: China, Vietnam, Laos.

**Lanelater laosensis** sp. nov.

(Plate VI, Fig. C, Plate VII, Fig. F)

Male. Length 30 mm, breadth about 7 mm. Body castaneous-brown, elongate, fusiform, more or less depressed above and opaque surface densely clothed with pale-yellowish pubescence; antennae and legs reddish-brown.

Head broadly impressed between eyes; surface coarsely and rugosely punctate; clypeal margin clearly impressed at middle, well-ridged over antennal insertions; eyes large and prominent; antennae short, slightly shorter than posterior angles of pronotum, second segment short, subcylindrical and a little longer than its breadth, third subconic and slightly longer than second, fourth about twice length of third and almost as long as the two precedings together, from fourth to tenth distinctly serrate. Pronotum subquadrate, clearly longer than its breadth, widest at posterior angles across; sides almost parallel at posterior half, thence weakly rounded and tapering toward anterior angles; disk coarsely covered with umbilicus-like punctures, these becoming coarser and rugoser toward sides and sparser and minuter toward posteriorly, and usually having a narrow median longitudinal ridge; posterior angles divergent and acutely projected behind, each bears a long carina above, which is prolonged anteriorly along lateral margin almost to basal two-thirds of lateral margin. Scutellum subquadrate, subvertical, punctulate and pubescent. Elytra about 2.7 times as long as basal breadth; the sides almost parallel from base to apical third, thence weakly rounded and gradually tapering toward extremities; striae fine, without defined punctures; intervals slightly convex, finely punctate and more or less minutely scabrous. Aedagus as figured.

Holotype: ♂ Laos, without exact date and collector; Paratype: 1 ♀, ibidem

Distribution: Laos.

This new species resembles closely *Lanelater fusiformis* (CANDÈZE, 1857), but can be distinguished from the latter by the following points: the body narrower and more slender, the punctures on the disk of pronotum and elytra more coarsely and rugosely set, the interspaces of punctures on pronotum and elytra minutely scabrous, and the aedeagus quite different as figured.

Subfamily **Agrypninae** FLEUTIAUX, 1919**Trachylacon distinctus** FLEUTIAUX, 1935 (Plate VII, Fig. B)*Trachylacon distinctus* FLEUTIAUX, 1935, Ann. Soc. Ent. France, CIV: 14 (Tonkin, Laos).*Trachylacon distinctus*: FLEUTIAUX, 1947, Notes d'Ent. Chinoise, XI (8): 250 (Tonkin).

Specimen examined: 1 ex., without exact date and collector.

Distribution: North Vietnam, Laos.

**Colaulon musculus** (CANDÈZE, 1857) (Plate VII, Fig. C)

*Lacon musculus* CANDÈZE, 1857, Mon. Elat., I: 141 (China).

*Adelocera musculus*: CANDÈZE, 1874, Révis, Mon. Elat.: 77 (Hong-Kong).

Specimens examined: 15 exs., without exact date and collector.

Distribution: South China, Laos, Formosa?

**Compsolaeon lapideus** (CANDÈZE, 1857)

*Lacon lapideus* CANDÈZE, 1857, Mon. Elat., I: 141 (Indes Orientalis).

*Adelocera lapidea*: FLEUTIAUX, 1927, Faune Colonies Franç.: 85, pl. I, fig. 14 (Tonkin, Laos).

*Compsolaeon lapideus*: FLEUTIAUX, 1947, Notes d'Ent. Chinoise, XI (8): 286 (Indo-China).

Specimens examined: 4 exs., without exact date and collector.

Distribution: Oriental India, Laos, Vietnam.

Subfamily **Conoderinae** FLEUTIAUX, 1919**Heteroderes triangularis** (ESCHSCHOLTZ, 1822)

Specimens examined: 70 exs., without exact date and collector.

Distribution: Vide in Part III.

**Prodrasterius candezei** (FLEUTIAUX, 1918)

Specimens examined: 12 exs., without exact date and collector.

Distribution: Vide in Part III.

**Prodrasterius cambodiensis** (FLEUTIAUX, 1889)

*Drasterius cambodiensis* FLEUTIAUX, 1889, Ann. Soc. Ent. France; 141 (Cambodia).

*Prodrasterius cambodiensis*: FLEUTIAUX, 1929, Ency. Ent., Col.: 37 (Cambodia).

Specimens examined: 10 exs., without exact date and collector.

Distribution: Cambodia, Laos.

Subfamily **Negastrinae** NAKANE & KISHII, 1956**Negastrius pulvereus** (CANDÈZE, 1896) comb. nov.

*Cryptohypnus pulvereus* CANDÈZE, 1896, Elat. nouv., VI: 53 (Annam).

*Cryptohypnus parvulus* FLEUTIAUX, 1902, Ann. Soc. Ent. France, LXXI: 575 (Tonkin).

*Zoroehrus pulvereus*: FLEUTIAUX, 1930, Bull. Mus. Hist. Nat. Paris, (2) II. 641 (Cochin-China).

Length 2 mm. Body small, almost parallel-sided and moderately convex; surface black except antennae fuscous and legs clearly pale-yellow; clothed with cinereous pubescence all over. Pronotum subquadrate, a little broader than long, the sides weakly sinuate before posterior angles, slightly rounded at middle; disk dome-like, minutely and densely punctate, usually having a very shallow, median longitudinal smooth line; posterior angles short, weakly projected posteriorly, each bears a fine carina above. Elytra about 1.6 times as long as basal breadth, the sides almost parallel from base to apical third, thence rounded and tapering toward extremities; striae defined, intervals almost flattened and densely and minutely punctate.

Specimens examined: 4 exs., without exact date and collector.

Distribution: Vietnam, Laos.

Subfamily **Oxypterinae** SCHENKLING, 1925**Oxypterus annamensis** FLEUTIAUX, 1918 (?) (Plate VII, Fig. G)

*Oxypterus annamensis* FLEUTIAUX, 1918, Bull. Mus. Hist. Nat. Paris XXIV: 212 (Annam).

*Oxypterus annamensis*: FLEUTIAUX, 1927, Faune Colonies Franç.: 121, pl. I, fig. 12 (♂) (Annam).

*Oxypterus annamensis*: FLEUTIAUX, 1947, Notes d'Ent. Chinoise, XI (8): 308 (♂) (Annam).

FLEUTIAUX (1918) described this species by only a male specimen and the female has not been found yet.

Specimen examined: 1 ♀, without exact date and collector.

Distribution: Vietnam, Laos.

**Camposternus auratus** (DRURY, 1773) (Plate VII, Fig. H)

*Elater auratus* DRURY, 1773, Illustr. Nat. Hist., II: 65, t. 55, f. 3 (China).

*Camposternus auratus*: FLEUTIAUX, 1927, Faune Colonies Franç.: 114 (Indo-China, Formosa).

*Camposternus auratus*: FLEUTIAUX, 1947, Notes d'Ent. Chinoise, XI (8): 319 (China, Indo-China).

Specimens examined: 9 exs., without exact date and collector.

Distribution: China, Vietnam, Laos, Formosa.

Subfamily **Dicrepidiinae** FLEUTIAUX, 1919**Sphenomerus brunneus** CANDÈZE, 1864 (Plate VI, Figs. D, E, Plate VII, Fig. I)

*Sphenomerus brunneus* CANDÈZE, 1864, Elat. nouv., I: 22 (Thailand).

*Sphenomerus brunneus*: FLEUTIAUX, 1918, Ann. Soc. Ent. France, LXXXVII: 204 (Tonkin).

*Sphenomerus brunneus*: FLEUTIAUX, 1929, Ency. Ent., Col.: 8 (Tonkin).

Length 16 mm, breadth about 4 mm. Body elongate, almost parallel-sided and moderately convex; surface entirely castaneous-brown and clothed with helvolus pubescence all over. Head quadrate, very coarsely and densely clothed with circular punctures; clypeal margin well developed and rounded at middle; nasal area very broad, higher than its breadth; eyes large and prominent. Pronotum trapezoidal, coarsely, densely and circularly punctate; posterior angles divergent and inclined at each tip, and each bears a distinct carina above. Elytra almost parallel-sided from base to apical third; striae rather fine, intervals almost flattened and finely punctate. Aedeagus and some basal segments of antenna as figured.

Specimen examined: 1 ♂, Laos, without exact date and collector.

Distribution: Thailand, Vietnam, Laos.

Subfamily **Elaterinae** FLEUTIAUX, 1936**Ludigenus politus** CANDÈZE, 1863

Specimen examined: 1 ♂, Laos (Quang Tr), 1921, AJTAI-KOVÁCH.

Distribution: Vide in Part III.

Subfamily **Melanotinae** JACOBSON, 1913**Thaumastiellus (Pulchronotus) brevis** (CANDÈZE, 1896)

*Diploconus brevis* CANDÈZE, 1896, Elat. nouv., VI: 61 (Tonkin).

*Diploconus brevis*: FLEUTIAUX, 1902, Ann. Soc. Ent. France, LXXI: 576 (Tonkin).

*Thaumastiellus (Pulchronotus) brevis*: FLEUTIAUX, 1933, Ann. Soc. Ent. France, CII: 207 (Tonkin).

Specimens examined: 3 exs., without exact date and collector.

Distribution: Vietnam, Laos.

Subfamily **Agriotinae** FLEUTIAUX, 1939**Chiagosnius delauneyi delauneyi** (FLEUTIAUX, 1887)

*Agonischius Delauneyi* FLEUTIAUX, 1887, Ann. Soc. Ent. France: 64, t. 4, f. 5 (Annam).  
*Agonischius Delauneyi*: FLEUTIAUX, 1918, Ann. Soc. Ent. France, LXXXVII: 261 (Cochinchina).

*Chiagosnius Delauneyi*: FLEUTIAUX, 1939, Ann. Soc. Ent. France, CVIII: 143 (Indo-China).

Specimen examined: 1 ♀, without exact date and collector.

Distribution: Vietnam, Laos.

Subfamily **Cardiophorinae** LENG, 1910**Dieronychus javaneus** CANDÈZE, 1860 comb. nov.

*Cardiophorus javaneus* CANDÈZE, 1860, Mon. Elat., III: 205 (Java).

*Cardiophorus javaneus*: CANDÈZE, 1888, Ann. Mus. Civ. St. Nat. Genova, II, VI: 681 (Burma).

*Cardiophorus javaneus*: FLEUTIAUX, 1918, Ann. Soc. Ent. France, LXXXVII: 230 (Annam, Cochinchina, Tonkin).

*Platynychus javaneus*: FLEUTIAUX, 1931, Bull. Soc. Zool. France, LVI: 324 (Cochinchina, Annam, Cambodia, Laos, Tonkin, Burma).

Specimens examined: 23 exs., without exact date and collector.

Distribution: Java, Burma, Cambodia, Vietnam, Laos.

**Dieronychus nebrozus** (MOTSCHULSKY, 1858) (Plate VI, Fig. F)

*Platynychus nebrozus* MOTSCHULSKY, 1858, Etud. Ent., VII: 59 (India Orientalis).

*Cardiophorus nebrozus*: CANDÈZE, 1860, Mon. Elat., III: 204 (Hindustan).

*Platynychus nebrozus*: FLEUTIAUX, 1931, Bull. Soc. Zool. France, LVI: 325 (Laos, Cochinchina, Burma).

Length 5 mm. Body oblong-ovate; surface entirely black except basal two segments of antennae and tibiae of legs yellow-brown, femora and some basal segments of tarsi more or less dusky-brown; clothed with fulvous pubescence all over, excepting head, anterior and posterior portions of pronotum, basal area and broad median transverse band on elytra, and most parts of ventral surface of body with cinereous pubescence.

Specimens examined: 14 exs., without exact date and collector.

Distribution: Burma, Vietnam, Laos, Oriental India.

**Dieronychus marginalis** (CANDÈZE, 1860) (Plate VI, Fig. G)

*Cardiophorus marginalis* CANDÈZE, 1860, Mon. Elat., III: 138 (Hindustan).

*Cardiophorus marginalis*: FLEUTIAUX, 1918, Ann. Soc. Ent. France, LXXXVII: 226 (Cochinchina).

*Platynychus marginalis*: FLEUTIAUX, 1931, Bull. Soc. Zool. France, LVI: 323 (Cochinchina).

Specimens examined: 4 exs., without exact date and collector.

Distribution: Oriental India, Burma, Vietnam, Laos.

## Part V.

## Malay Peninsula, Singapore and Indonesia

Subfamily **Agrypninae** FLEUTIAUX, 1919***Agraeus mannerheimi*** CANDÈZE, 1857, (Plate VIII, Figs. A, B, C)*Agraeus mannerheimi* CANDÈZE, 1857, Mon. Elat., I: 116, t. 3, fig. 4 (Java).*Agraeus Ritsemae* CANDÈZE, 1883, Notes Leyden Museum, V: 204 (Sumatra).*Agraeus mannerheimi*: FLEUTIAUX, 1935, Ann. Soc. Ent. France, CIV: 26 (Java, Sumatra, Malacca, Borneo, Philippines).

Female. Length 5 mm, breadth about 2.5 mm. Body ovate, dusky-brown and strongly convex above, clothed with fuscous scale-like pubescence and having a small cluster of whitish scale-like pubescence at each side of apical third on elytra; antennae yellow-brown (basal segment dark reddish-brown). Head flattened on vertical portion between eyes, clearly concaved at middle between antennae; surface densely, coarsely and rugosely punctate. Pronotum semicircular, broadly and strongly impressed at sides; middle portion of anterior disk abruptly projected upward and each side of its base having a cluster of castaneous scale-like pubescence, and posterior portion of its projection bears a pair of eye-like nodules which are clearly concaved at each apex; basal area before the scutellum having a small nodule-like elevation. Scutellum flattened, subtriangular and pointed apically. Elytra bearing six rows of long, erect, tuft of scale-like pubescence, which are very developed at the most convex area on the surface.

Male. Length 4.5 mm, breadth about 2.3 mm. The general characters are allied to the female, but can be distinguished by the smaller body and the more simple pronotum bearing only a nodule-like upward projection.

Specimens examined: 1 ♀, Singapore, 1898, without exact collector; 1 ♂, ibidem. Distribution: Java, Sumatra, Singapore, Borneo, Philippines.

***Brachylaeon (Brachylaeon) microcephalus microcephalus*** MOTSCHULSKY, 1858  
(Plate VIII, Fig. D)

*Brachylaeon microcephalus* MOTSCHULSKY, 1858, Etud. Ent., VII: 60 (Ceylon).*Laeon trifasciatus* CANDÈZE, 1864, Elat. nouv., I: 10 (Ceylon).*Laeon trifasciatus*: CANDÈZE, 1894, Ann. Mus. Civ. St. Nat. Genova, II, XII: 486 (Sumatra).*Brachylaeon microcephalus*: FLEUTIAUX, 1947, Notes d'Ent. Chinoise, XI (8): 252 (Indo-China).

Specimens examined: 3 exs., Singapore, 1898, without exact collector.

Distribution: Ceylon, India, Sikkim, Burma, Malacca, Sumatra, Borneo, Singapore, Philippines.

***Brachylaeon (Brachylaeon) minicephalus*** sp. nov.

(Plate VIII, Fig. E)

Length 2 mm, breadth about 0.8 mm. Body very small, ovate and strongly convex; surface shining, yellow-brown except head dusky brown, and having very obscure, broad, dark-brown patterns on medio-lateral areas on elytra; antennae and legs pale-yellow; clothed with cinereous scale-like pubescence, but the dark-brown areas on elytra provided with fulvous pubescence.

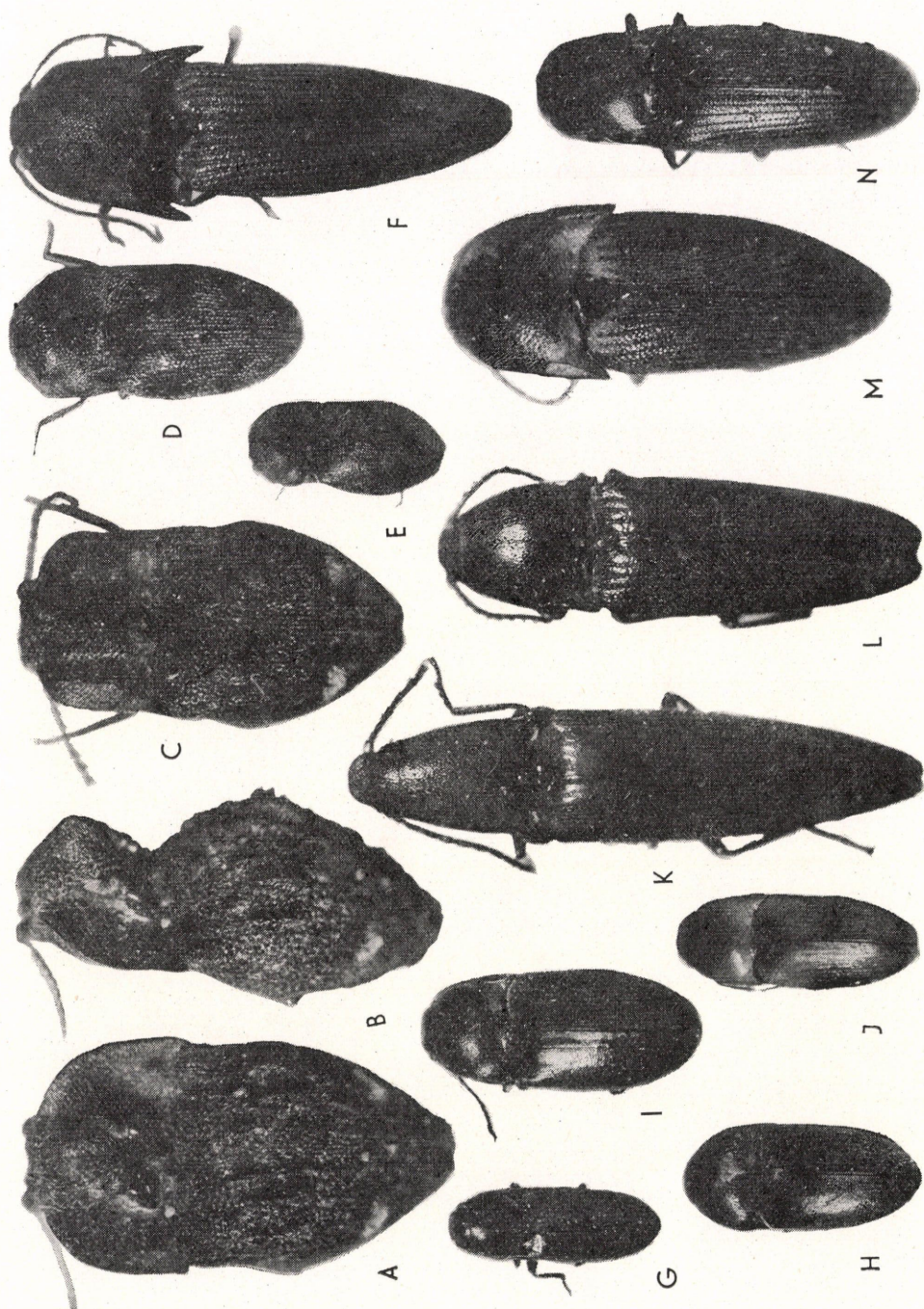


Plate VIII.

This new species is very closely allied to *Brachylacon (Brachylacon) microcephalus microcephalus* MOTSCHULSKY, 1858, but can be distinguished from the latter by the smaller and generally yellow-brown body, and the disk of pronotum and elytra being more gently convex and more sparsely and evenly punctate.

Female unknown.

Holotype: ♂, Singapore, 1897, without exact collector.

Distribution: Singapore.

Subfamily **Conoderinae** FLEUTIAUX, 1917

**Pachyderes minor** CANDÈZE, 1874, (Fig. 3, Plate VIII, Fig. F)

*Pachyderes minor* CANDÈZE, 1889, *Elat. nouv.*, IV: 22 (Malacca).

*Pachyderes minor*: FLEUTIAUX, 1901, *Bull. Soc. Ent. France*: 101 (Malacca).

Specimens examined: 3 exs., Singapore, 1898, without exact collector.

Distribution: Malacca, Singapore.

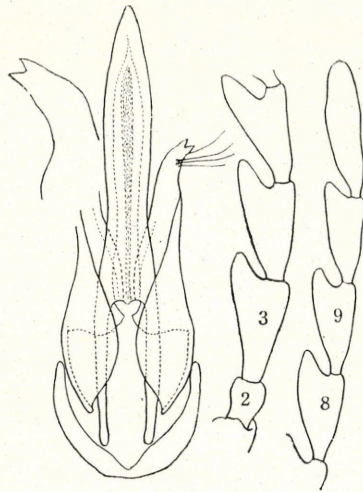


Fig. 3. Aedeagus and antenna of *Pachyderes minor* CANDÈZE, 1874

Subfamily **Negastriinae** NAKANE & KISHII, 1956

**Quasimus (Quasimus) misellus** (BOHEMAN, 1858) (Plate VIII, Fig. G)

*Hypnoidus misellus* BOHEMAN, 1858, *Eugen. Resa*, Col.: 69 (Java).

*Hypnoidus misellus*: CANDÈZE, 1860, *Mon. Elat.*, III: 89 (Java).

Specimens examined: 2 exs., Tenasserim, without exact date, FURHSTORFER.

Distribution: Java, Tenasserim.

**Quasimus (Quasimus) subovalis** FLEUTIAUX, 1930 (Plate VIII, Fig. H)

*Quasimus subovalis* FLEUTIAUX, 1930, *Bull. Mus. Hist. Nat. Paris*, (2) II: 643 (Tonkin, Bengal, Sumatra, Yunnan, Tenasserim).

Specimens examined: 2 exs., Singapore, 1897, without exact collector.

Distribution: Sumatra, Singapore, Tenasserim, Yunnan, Tonkin, Bengal.

***Yukoana tenasserimensis* sp. nov.**

(Plate VIII, Fig. I)

Length 3.5 mm, breadth about 1.7 mm. Body oblong-ovate, almost parallel-sided and moderately convex; surface shining and entirely black; clothed with fulvous pubescence except posterior angles of pronotum, sutural intervals on elytra, antennae and legs provided with cinereous pubescence.

Head gently convex between eyes, flattened on vertical portion between antennae; surface coarsely and evenly punctate; clypeal margin well ridged and prolonged downward at middle; antennae very long, extending beyond posterior angles of pronotum at least by apical two segments, second segment short, cylindrical, third also cylindrical and clearly longer than second, from fourth to tenth weakly serrate. Pronotum trapezoid distinctly wider than its length, widest at posterior angles across; sides weakly sinuate before posterior angles, thence weakly rounded and gradually tapering toward anterior angles; disk gently convex, rather coarsely and evenly punctate; posterior angles short, not divergent, each bearing a long carina above, which is prolonged anteriorly to near anterior margin. Scutellum flattened, pointed apically, surface bears a very deep, ring-like impression at middle. Elytra about 2.2 times as long as basal breadth, parallel-sided from base to apical third thence gradually tapering toward extremities; striae obsolete; surface rather coarsely and evenly punctulate.

Holotype: ♂ and 3 exs. of paratypes: Tenasserim, without exact date, FURHSTORFER.

Distribution: Tenasserim.

This new species closely resembles *Yukoana formosana* ÔHIRA, 1966 from Formosa and *Quasimus geminus* FLEUTIAUX, 1942 from North Burma, but can be distinguished from the latter by the body larger and more robust, the antennae more elongate and more broadly serrate in general, the punctures on the disk of pronotum and elytra more coarsely and densely set.

***Hypdonus singaporensis* sp. nov.**

(Plate VIII, Fig. J)

Female. Length 2.5 mm, breadth about 1 mm. Body oblong-ovate, almost parallel-sided and moderately convex above; surface shining, entirely pale yellow-brown except head, disk of pronotum, scutellum, broad transverse band of middle area and apical portion on elytra and elytral area around the scutellum more or less dusky brown; clothed with fine, cinereous pubescence all over.

Head gently convex between eyes, but very conspicuously concaved at its middle, flattened between antennae; surface moderately densely and evenly punctate, each puncture forming umbilical; clypeal margin well ridged, rounded at middle; antennae short, not reaching to posterior angles of pronotum, second segment short, cylindrical, clearly longer than its breadth, third subtriangular and a little shorter than second, these two together slightly longer than fourth, from fourth to tenth weakly serrate. Pronotum subquadrate, distinctly wider than its length; sides almost parallel at posterior half, thence rounded and tapering toward anterior angles; disk moderately convex, moderately densely and rather evenly

covered with two kinds of punctures (larger and small), of which the larger one forming umbilical; posterior angles short, not divergent, each bears a long carina above, which is prolonged anteriorly to near the anterior margin. Scutellum tongue-shaped, flattened, weakly pointed apically, pubescent and punctulate. Elytra about 1.8 times as long as basal breadth; sides almost parallel from base to apical third, thence rounded and gradually tapering toward extremities; striae very narrow; intervals flattened, almost smooth, but minutely punctate, not rugose or scabrous.

Holotype: ♀, Singapore, 1897, without exact collector.  
Distribution: Singapore.

This new species is closely allied to *Hypdonus bakeri* (FLEUTIAUX, 1914) and *Hypdonus? fasciatus* CANDÈZE, 1865, but can be distinguished from the latter in having the carina of each posterior angles of pronotum very long, the scutellum flattened, but not convex, and the pronotum clearly wider than its length.

Subfamily **Melanotinae** JACOBSON, 1913

**Neodiploconus prominens** (ERICHSOHN, 1841) comb. nov. (Plate VIII, Fig. K)

*Cratonychus prominens* ERICHSOHN, 1841, Zeitschr. Ent., III: 109 (Java).

*Diploconus prominens*: CANDÈZE, 1860, Mon. Elat., III: 292 (Java).

*Diploconus prominens*: HEYNE & TASCHENBERG, 1908, Exot. Käf.: 160, t. 25 fig. 43 (Java).

Specimens examined: 3 ♀♀, Java, 1893, FURHSTORFER.

Distribution: Sikkim, Java.

**Melanotus (Spheniscosomus?) rusticus** (ERICHSOHN, 1841) (Plate VIII, Fig. L)

*Cratonychus rusticus* ERICHSOHN, 1841, Zeitschr. Ent., III: 107 (Java).

*Melanotus rusticus*: CANDÈZE, 1860, Mon. Elat., III: 338 (Java).

*Spheniscosomus rusticus*: SCHWARZ, 1892, Deutsche Ent. Zeitschr.: 150, t. 2, fig. 5 (Java).

SCHWARZ (1892) placed this species to the genus *Spheniscosomus* SCHWARZ, 1892, but the prosternal process of this under mentioned three specimens are very weakly and gradually inclined toward apex. Probably, this species rather may be placed in the subgenus *Melanotus* than in the subgenus *Spheniscosomus* SCHWARZ, 1892.

Specimens examined: 3 exs., Java, 1893, FURHSTORFER.

Distribution: Java.

Subfamily **Physorhininae** FLEUTIAUX, 1919

**Anchastus castelnaui** CANDÈZE, 1878 (Fig. 4)

*Anchastus castelnaui* CANDÈZE, 1878, Elat. nouv., II: 24 (Bankok).

*Anchastus castelnaui*: CANDÈZE, 1888, Ann. Mus. Civ. St. Nat. Genova, II, VI: 676 (Tenasserim).

*Anchastus castelnaui*: FLEUTIAUX, 1929, Ency. Ent., Col: 41 (Laos, Tonkin).

Specimens examined: 12 exs., Singapore, 1898, without exact collector.

Distribution: Thailand, Tenasserim, Singapore, Sumatre, Borneo, Laos, Vietnam.

**Anchastus carinatus** CANDÈZE, 1896 (Plate VIII, Fig. M)

*Anchastus carinatus* CANDÈZE, 1896, Elat. nouv., VI: 48 (Sumatra).

Specimen examined: 1 ♂, Singapore, 1898, without exact collector.

Distribution: Sumatra, Singapore.

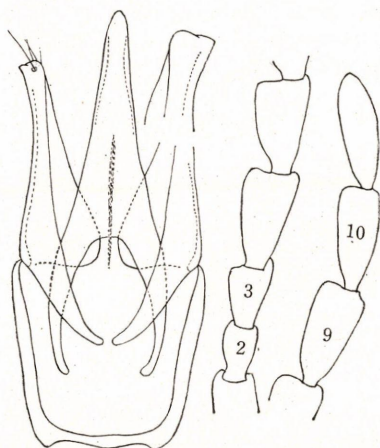


Fig. 4. Aedeagus and antenna of *Anchastus castelnaui* CANDÈZE, 1878

Subfamily **Agriotinae** FLEUTIAUX, 1939

**Chiagosnius cineraceus** (CANDÈZE, 1863) comb. nov.

*Angonischius cineraceus* CANDÈZE, 1863, Mon. Elat., IV: 422. Singapore  
Specimen examined: 1 ♂, Singapore, 1897, without exact collector.  
Distribution: Singapore.

**Glyphonyx correctus** CANDÈZE, 1891 (Plate VIII, Fig. N)

*Glyphonyx correctus* CANDÈZE, 1891, Ann. Mus. Hist. Nat. Genova, II, X: 789 (Burma).  
Specimens examined: 4 exs., Tenasserim, without exact collector.  
Distribution: Burma, Tenasserim.

**Explanation of Plates**

**Plate I**

- Fig. A: *Paracalais putridus putridus* (CANDÈZE, 1857); body length 33 mm  
Fig. B: *Paracalais elongatus* (MIWA, 1929); 28 mm  
Fig. C: *Adelocera (Adelocera) setigera* (BATES, 1866); 19 mm  
Fig. D: *Adelocera (Sabikikorius) sauteri* sp. nov.; 14 mm  
Fig. E: *Agrypnus (Agrypnus) formosanus* (BATES, 1866); 18 mm  
Fig. F: *Compsolacon formosanus* (MIWA, 1929); 17 mm  
Fig. G: *Lanelater politus* (CANDÈZE, 1957) 38 mm  
Fig. H: *Campsosternus gemma* CANDÈZE, 1857; 42 mm  
Fig. I: *Campsosternus auratus* DRURY, 1773; 48 mm

**Plate II**

- Fig. A: *Cremnostethus telum* (CANDÈZE, 1893); 18 mm  
Fig. B: *Hemiops flava* LAPORTE DE CASTELNAU, 1836; 16 mm  
Fig. C: *Procaerus ligatus* (CANDÈZE, 1878); 11 mm

- Fig. D: *Aeoloderma sinensis* (CANDÈZE, 1859); 4 mm  
 Fig. E: *Aeoloderma brachmana* (CANDÈZE, 1859); 5,5 mm  
 Fig. F: *Melanozanthus nigripennis* FLEUTIAUX, 1928; 9.5 mm  
 Fig. G: *Glyphonyx longulus* MIWA, 1930; 8 mm  
 Fig. H: *Glyphonyx rubricollis rubricollis* MIWA, 1928; 9 mm  
 Fig. I: *Silesis sauteri* MIWA, 1930; 9.5 mm  
 Fig. J: *Cardiophorus carduelis* CANDÈZE, 1865; 7 mm  
 Fig. K: *Cardiotarsus rarus* MIWA, 1927; 11 mm

### Plate III

- Fig. A: *Paracalais sordidus* (WESTWOOD, 1848); body length 40 mm  
 Fig. B: *Paracalais chinensis* sp. nov.; 26 mm  
 Fig. C: *Compsolacon lapideus* (CANDÈZE, 1857); 11 mm  
 Fig. D: *Compsolacon sinensis* (CANDÈZE, 1857); 10.5 mm  
 Fig. E: *Anathesis laconooides* (CANDÈZE, 1864); 14 mm  
 Fig. F: *Heteroderes macroderes* (CANDÈZE, 1859); 12 mm  
 Fig. G: *Camposternus dohrni* WESTWOOD, 1848; 19 mm  
 Fig. H: *Melanotus (Melanotus) fuscus* (FABRICIUS, 1801); 14 mm  
 Fig. I: *Ludigenus politus* (CANDÈZE, 1863); 32 mm

### Plate IV

- Figs. A, B, C: *Heteroderes triangularis* (ESCHSCHOLTZ, 1822)  
 Fig. D: *Heteroderes poci* sp. nov.  
 Figs. E, F, G: *Prodrasterius collaris* (CANDÈZE, 1859)  
 Figs. H, I, J: *Prodrasterius candezei* (FLEUTIAUX, 1918)  
 Figs. K, L: *Negastrius indicus* (MOTSCHULSKY, 1858)  
 Fig. M: *Negastrius mechanicus* (FLEUTIAUX, 1925)  
 Figs. N, O: *Agriotes tonkinensis* (FLEUTIAUX, 1894)

### Plate V

- Fig. A: *Adelocera lupinosa* (CANDÈZE, 1857); body length 9.5 mm  
 Fig. B: *Adelocera inops* (CANDÈZE, 1874); 8 mm  
 Fig. C: *Adelocera tosta* (CANDÈZE, 1857); 7.5 mm  
 Fig. D: *Pachyderes niger* CANDÈZE, 1878; 13.5 mm  
 Fig. E: *Conoderus dohrnii* CANDÈZE, 1878; 8.5 mm  
 Fig. F: *Pectocera tonkinensis* FLEUTIAUX, 1918; 29 mm  
 Fig. G: *Camposternus furhstorferi* SCHWARZ, 1902; 31 mm  
 Fig. H: *Melanotus (Spheniscosomus) albivellus* CANDÈZE, 1864; 18 mm  
 Fig. I: *Dicronychus dentatus* (FLEUTIAUX, 1931); 7 mm

### Plate VI

- Fig. A: *Lanelater mucronatus* (CANDÈZE, 1857)  
 Fig. B: *Lanelater fusiformis* (CANDÈZE, 1857)  
 Fig. C: *Lanelater laosensis* sp. nov.  
 Figs. D, E: *Sphenomerus brunneus* CANDÈZE, 1864  
 Fig. F: *Dicronychus nebrus* (MOTSCHULSKY, 1858)  
 Fig. G: *Dicronychus marginalis* (CANDÈZE, 1860)

### Plate VII

- Fig. A: *Alaotypus distinctus* (FLEUTIAUX, 1920); body length 19 mm  
 Fig. B: *Trachylacon distinctus* FLEUTIAUX, 1935; 4 mm  
 Fig. C: *Colaulon musculus* (CANDÈZE, 1857); 8 mm

- Fig. D: *Lanelater mucronatus* (CANDÈZE, 1857); 30 mm  
Fig. E: *Lanelater jusiformis* (CANDÈZE, 1857); 34 mm  
Fig. F: *Lanelater laosensis* sp. nov.; 30 mm  
Fig. G: *Oxynterus annamensis* FLEUTIAUX, 1918 (?); 43 mm  
Fig. H: *Campsosternus auratus* (DRURY, 1773); 41 mm  
Fig. I: *Sphenomerus brunneus* CANDÈZE, 1864; 16 mm

## Plate VIII

- Figs. A, B: *Agraes mannerheimi* CANDÈZE, 1857; female, body length 5 mm  
Fig. C: Ditto, male, 4.5 mm  
Fig. D: *Brachylacon (Brachylacon) microcephalus microcephalus* MOTSCHULSKY, 1858; 3 mm  
Fig. E: *Brachylacon (Brachylacon) minicephalus* sp. nov.; 2 mm  
Fig. F: *Pachyderes minor* CANDÈZE, 1874, 9.5 mm  
Fig. G: *Quasimus (Quasimus) misellus* (BOHEMAN, 1858); 2.5 mm  
Fig. H: *Quasimus (Quasimus) subovalis* FLEUTIAUX, 1930; 3 mm  
Fig. I: *Yukoana tenasserimensis* sp. nov.; 3.5 mm  
Fig. J: *Hyptonus singaporensis* sp. nov.; 2.5 mm  
Fig. K: *Neodiploconus prominens* (ERICHSON, 1841); 15 mm  
Fig. L: *Melanotus (Spheniscosomus?) rusticus* (ERICHSON, 1841); 14 mm  
Fig. M: *Anchastus carinatus* CANDÈZE, 1896; 5.5 mm  
Fig. N: *Glyphonyx correctus* CANDÈZE, 1891; 5 mm

