

**On some species of *Euonthophagus* Balthasar, 1959
and *Onthophagus* Latreille, 1802 collected in Syria
(Coleoptera: Scarabaeidae)**

L. NÁDAI

H-1147 Budapest, Zsolnay Vilmos utca 13, III/4, Hungary. E-mail: nadaiscarab@freemail.hu

Abstract – Locality records of 13 species of *Euonthophagus* BALTHASAR, 1959 and *Onthophagus* LATREILLE, 1802 from Syria are listed. *Onthophagus* (*Palaeonthophagus*) *basipustulatus* HEYDEN, 1889 is new to Syria. With 5 figures.

Key words – Scarabaeidae, *Euonthophagus*, *Onthophagus*, Syria, list of species, new record.

INTRODUCTION

Thirteen species of *Euonthophagus* BALTHASAR, 1959 and *Onthophagus* LATREILLE, 1802 collected in a trip to Syria, from 19th to 31st May, 2004 are listed here in alphabetical order. Usage of the species names is based on the taxonomic arrangement of ZUNINO (1979). The majority of the material collected is preserved in the collection of L. NÁDAI, Budapest (CLN), while some duplicates have been donated to the Hungarian Natural History Museum, Budapest (HNHM) and to the collection of S. ZIANI, Forlì (CSZ). The collector of all specimens is L. NÁDAI. Localities are according to CARTOGRAPHIA (2002).

LIST OF SPECIES

Euonthophagus amyntas (OLIVIER, 1789) s. l.

Type locality – Provence, France.

Distribution – South Europe, Asia Minor, Middle East, Iran and Afghanistan (BARAUD 1992), Central Asia, Western China (KABAKOV 1977).

Male genital armature – ZUNINO (1972).

Material examined – Prov. Hama, Jabal An Nusayrîyah, Jourin, ~650 m, 20.V.2004 (30, CLN; 6, HNHM).

Euontophagus atramentarius (MÉNÉTRIES, 1832)

Type locality – Baku, Azerbaijan.

Distribution – Bulgaria, Greece, Asia Minor, Caucasus, Middle East (BALTHASAR 1963).

Male genital armature – ZUNINO (1972).

Material examined – Prov. Hama, Jabal An Nusayrîyah, Jourin, ~650 m, 20.V.2004 (20, CLN; 2, HNHM).

Onthophagus (Furconthophagus) furcatus (FABRICIUS, 1781)

Type locality – Arabia.

Distribution – Central and Southern Europe, Asia Minor, Middle East (BALTHASAR 1963), Central Asia to Mongolia (ZIANI & GUDENZI 2000), Morocco (BARAUD 1985).

Male genital armature – ZUNINO (1979).

Material examined – Prov. Hama, Jabal An Nusayrîyah, Jourin, ~650 m, 20.V.2004 (5, CLN; 2, HNHM); prov. Hama, Jabal An Nusayrîyah, Kansabba, ~800 m, 20.V.2004 (3, CLN).

Onthophagus (Onthophagus) illyricus (SCOPOLI, 1763)

Type locality – Carniolia, Slovenia.

Distribution – Central and Southern Europe, Asia Minor, Iraq, Iran, Syria (BALTHASAR 1963).

Male genital armature – ZIANI & GUDENZI (2000).

Material examined – Prov. Latakia, Jabal An Nusayrîyah, Slunfeh, ~1100 m, 19.V.2004 (1, CLN).

Onthophagus (Onthophagus) taurus (SCHREBER, 1759)

Type locality – Saxony, Germany.

Distribution – Europe, Asia Minor, Middle East to Afghanistan (BALTHASAR 1963), North Africa (BARAUD 1985).

Male genital armature – ZUNINO (1979).

Material examined – Prov. Damascus, Jabal ash Sharqi, Ayn an Nusur, ~2100 m, 23.V.2004(1, CLN); prov. Latakia, Jabal al Aqra, Kasab, ~800 m, 28.V.2004 (3, CLN).

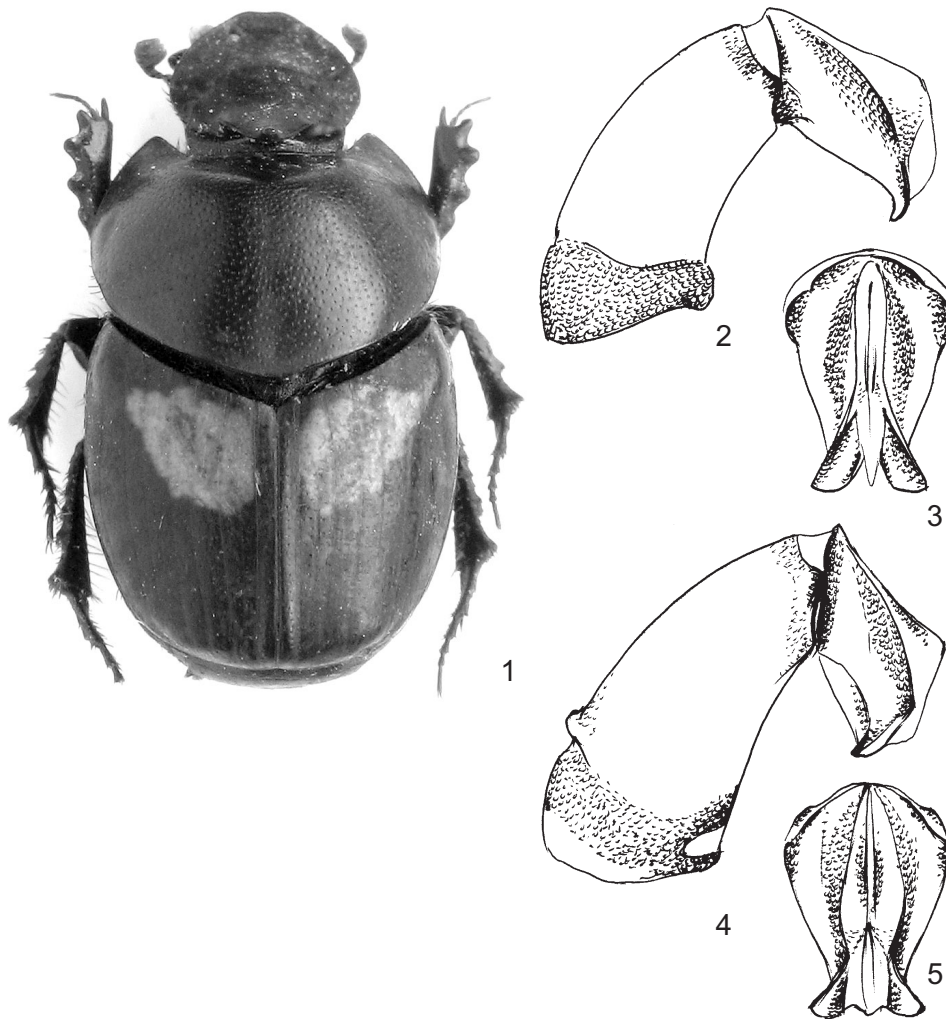
Onthophagus (Palaeonthophagus) basipustulatus HEYDEN, 1889
(Figs 1–3)

Type locality – Buchara, Turkestan.

Distribution – Transcaucasia, Turkestan (BALTHASAR 1963).

Male genital armature – Figs 2–3.

Material examined – Prov. Hama, Jabal An Nusayriyah, Kansabba, ~800 m, 20.V.2004 (1, CLN).



Figs 1–5. 1–3 = *Onthophagus (Palaeonthophagus) basipustulatus* HEYDEN, 1889: 1 = imago, 2 = aedeagus, lateral view (Uzbekistan), 3 = same, frontal view; 4 = *Onthophagus (Palaeonthophagus) truchmenus* KOLENATI, 1846 (Syria), aedeagus, lateral view, 5 = same, frontal view

Remarks – First record for Syria. Some authors, e.g. D'ORBIGNY (1898) and BALTHASAR (1963) regarded *Onthophagus (Palaeonthophagus) formaneki* REITTER, 1897 as a junior synonym of *Onthophagus basipustulatus*. This was not the conclusion of IABLOKOV-KHNZORIAN (1967), who considered the taxon as a valid species on the basis of external morphology, and this is the opinion of S. ZIANI (pers. comm.), too. *Onthophagus bifenestratus* REITTER, 1898 is regarded as junior synonym of *Onthophagus formaneki* REITTER (ZUNINO, 1978). The type locality of *Onthophagus formaneki* is Araxes valley, Armenia, that of *Onthophagus bifenestratus* is Zeytun (now Süleymanlı), Turkey. *Onthophagus formaneki* REITTER has never been reported from Syria. The picture shown in Fig. 1 was taken from a specimen from Uzbekistan (Tien Shan, 1200 m, Silvestral Reserve of Tshatkal, steppe meadow, from horse dung, 3. VI. 1981, leg. O. MERKL), because the Syrian specimen lacks the right foreleg. In all other respects it is identical with the Syrian specimen.

Onthophagus (Palaeonthophagus) fissicornis (STEVEN, 1809)

Type locality – Iberia, Georgia.

Distribution – South-Eastern Europe, Asia Minor, Middle East (BALTHASAR 1963), Israel (CHIKATUNOV & PAVLIČEK 1997).

Male genital armature – ZIANI & GUDENZI (2000).

Material examined – Prov. Latakia, Jabal An Nusayrîyah, Slunfeh, ~1100 m, 19.V.2004 (2, CLN); prov. Latakia, Jabal An Nusayrîyah, Kansabba, ~800 m, 20.V.2004 (5, CLN); prov. Hama, Jabal An Nusayrîyah, Jourin, ~650 m, 20.V.2004 (5, CLN; 2, HNHM).

Onthophagus (Palaeonthophagus) hermonensis BARAUD, 1982

Type locality – Mount Hermon, Israel.

Distribution – Israel (BARAUD 1982), Syria (ZIANI & GUDENZI 2001).

Male genital armature – BARAUD (1982).

Material examined – Prov. Hama, Jabal An Nusayrîyah, Kansabba, ~800 m, 20.V.2004 (22, CLN; 2, HNHM; 4, CSZ).

Onthophagus (Palaeonthophagus) lemur (FABRICIUS, 1781)

Type locality – Leipzig, Germany.

Distribution – Central and South Europe, Caucasus, Asia Minor (BALTHASAR 1963), Syria (ZIANI & GUDENZI 2001), Iran (BARAUD 1968) to Mongolia (ZIANI 1995).

Male genital armature – ZIANI & GUDENZI (2000).

Material examined – Prov. Latakia, Jabal An Nusayrīyah, Slunfeh, ~1100 m, 19.V.2004 (3, CLN).

Onthophagus (Palaeonthophagus) marginalis GEBLER, 1817, s.l.

Type locality – Siberia, Russia.

Distribution – South-eastern Europe, Asia Minor, Middle East, Siberia, Northern China (BALTHASAR 1963).

Male genital armature – ZIANI & GUDENZI (2001).

Material examined – Prov. Damascus, Jabal Lubnan ash Sharqi, Sîrghaya, Wadi Manshoura, ~1600 m, 25.V.2004 (1, CLN).

Remarks – The taxonomy of the species belonging to the *marginalis* group is still unclear and needs a revision.

Onthophagus (Palaeonthophagus) sericatus REITTER, 1893

Type locality – Somkhetiya, Armenia/Georgia.

Distribution – Southern Croatia, Albania, Asia Minor, Caucasus, Middle East, Iran (BALTHASAR 1963).

Male genital armature – ZUNINO (1978).

Material examined – Prov. Latakia, Jabal An Nusayrīyah, Slunfeh, ~1100 m, 19.V.2004 (4, CLN); prov. Hama, Jabal An Nusayrīyah, Jourin, ~650 m, 20.V.2004 (7, CLN; 1, HNHM).

Onthophagus (Palaeonthophagus) suturellus BRULLÉ, 1832

Type locality – Peloponnesus, Greece.

Distribution – Greece, Asia Minor, Middle East, Georgia, Iran (BALTHASAR 1963).

Male genital armature – ZIANI & GUDENZI (2001).

Material examined – Prov. Damascus, Jabal Lubnan ash Sharqi, Sîrghaya, Wadi Manshoura, ~1600 m, 25.V.2004 (1, CLN)

Onthophagus (Palaeonthophagus) truchmenus KOLENATI, 1846

(Figs 4–5)

Type locality – Ielizavetpol, Armenia.

Distribution – Armenia, Caucasus, Iran, Syria, Lebanon (BARAUD 1992), Turkey, Central Asia, Israel (CHIKATUNOV & PAVLIČEK 1997)

Male genital armature – Figs 4–5.

Material examined – Prov. Damascus, Jabal Lubnan ash Sharqi, Sirghaya, Wadi Manshoura, ~1600 m, 25.V.2004 (31, CLN; 4, HNHM).

Remarks – The systematics of the taxa related to *Onthophagus truchmenus* is still unclear and needs a revision.

*

Acknowledgements – The author is indebted to S. ZIANI (Forlì) for his advice and help in identification of some specimens; to N. RAHMÉ (Budapest) for taking the picture for Fig. 1; to J. PÁL (HNHM, Budapest) for producing Figs 2–5; and to O. MERKL (HNHM, Budapest) for his advice and linguistic help.

REFERENCES

- BALTHASAR, V. 1963: *Monographie der Scarabaeidae und Aphodiidae der palaarktischen und orientalischen Region. Coleoptera Lamellicornia. Band 2.* – Tschechoslowakische Akademie der Wissenschaften, Prag, 628 pp.
- BARAUD, J. 1968: Contribution à la faune de l' Iran. 10. Coléoptères Scarabaeoidea. – *Annales de la Société entomologique de France (Nouvelle série)* **4**(4): 915–925.
- BARAUD, J. 1982: Nouveaux Pachydemini et Onthophagini de la faune Paléarctique. – *Nouvelle Revue d'Entomologie* **12**: 235–240.
- BARAUD, J. 1985: *Coléoptères Scarabaeoidea: Faune du Nord de l'Afrique, du Maroc au Sinaï.* – Lechevalier, Paris, 650 pp.
- BARAUD, J. 1992: *Coléoptères Scarabaeoidea d'Europe.* – Fédération Française des Sociétés de Sciences Naturelles & Société Linnéenne de Lyon, 856 pp.
- CARTOGRAPHIA 2002: *Syria, Lebanon.* – Cartographia Kft., Budapest. [Map.]
- CHIKATUNOV, V. & PAVLIČEK, T. 1997: Catalogue of the beetles (Coleoptera) in Israel and adjacent areas. 1. Scarabaeoidea. – *Klapalekiana* **33**: 37–65.
- D'ORBIGNY, H. 1898: Synopsis des Onthophagides paléarctiques. – *Abeille* **29**: 117–245.
- IABLOKOV-KHNZORIAN, S. M. 1967: *Fauna Armyanskoy SSR. VI: Scarabaeoidea.* [Fauna of the Armenian SSR. VI: Scarabaeoidea.] – *Izvestiya Akademii Nauk Armyanskoi SSR*, Erevan, 224 pp.
- KABAKOV, O. N. 1977: Obzor plastinchatousykh zhukov podroda Euonthophagus Balth. roda Onthophagus Latr. (Coleoptera, Scarabaeidae) fauny SSSR i sopredel'nykh stran. (A review of scarabaeids of the subgenus Euonthophagus Balth. of the genus Onthophagus Latr. (Coleoptera, Scarabaeidae) of the USSR and adjacent countries.) – *Entomologicheskoe Obozrenie* **56**(2): 383–394.
- ZIANI, S. 1995: Catalogo faunistico ed analisi zoogeografica degli Scarabaeoidea sacrocoprofagi della “Romagna zangheriana” (Coleoptera, Scarabaeidae). – *Bollettino dell'Associazione Romana di Entomologia* **49**(3–4) [1994]: 169–214.
- ZIANI, S. & GUDENZI, I. 2000: About some Onthophagus Latreille, 1802 (sensu lato) collected during a trip to Iran. – *Quaderno di Studi e Notizie di Storia Naturale della Romagna* **13** (Supplement): 17–26.
- ZIANI, S. & GUDENZI, I. 2001: A survey of the Onthophagus (s.l.) species occurring in Syria (Coleoptera, Scarabaeidae, Scarabaeinae). – *Memorie della Società entomologica italiana* **80**: 87–105.

- ZUNINO, M. 1972: Revisione delle specie paleartiche del genere *Onthophagus* Latr. (Coleoptera, Scarabaeoidea). I. – Il sottogenere *Euonthophagus* Balth. – *Bollettino del Museo di Zoologia dell'Università di Torino* **1**: 1–28.
- ZUNINO, M. 1978: Revisione delle specie paleartiche del sottogenere *Onthophagus* (sensu stricto) Latr. (Coleoptera, Scarabaeoidea). I tipi di E. Reitter ed E. Csiki. – *Bollettino del Museo di Zoologia dell'Università di Torino* **6**: 75–122.
- ZUNINO, M. 1979: Gruppi artificiali e gruppi naturali negli *Onthophagus* (Coleoptera, Scarabaeoidea). – *Bollettino del Museo di Zoologia dell'Università di Torino* **1**: 1–18.